

Aspiring Minds' Campus Analysis Report

Dr Ambedkar Institute of engineering

(B.Tech/B.E - 2021)



Aspiring Minds Assessment Pvt. Ltd.

Study of Students' Employability and their Performance in AMCAT

TABLE OF CONTENTS

Purpose of this Report	3
Introduction	5
Score Interpretation	7
Percentile Interpretation	7
Section No. 1 - Students\' Capability and Training Need Analysis	8
I. Inferences	9
II. Performance Summary	10
III. Training Suggestion	11
Section No. 2 - Students\' Employability	12
I. Perspective on Corporate Shortlisting Criteria	12
II. Employability Prospects	13
III. Bird's-eye-view of Employability	14
Section No. 3 - Intra Campus Comparison	15
I. Stream Comparison	15
Section No. 4 - Aspiring Minds' Concluding Words	19
Section No. 5 - Appendix	20
I. Candidates Score Table	20
II. Statistical Significance (Confidence)	42
III. National Average (Norm)	42
IV. Variance (Standard Deviation)	42
V. About Aspiring Minds	43

Purpose of this Report

The Aspiring Minds Campus Analysis Report provides a detailed analysis of the student quality and their employability in the industry. Our aim is to produce a report which is useful to the campus and includes a comprehensive comparison across different degrees, streams and batches. All such analysis will serve as an employability checkup for students and accordingly, the administration can prioritize its efforts to increase the overall student employability.

The various sections of this report give a broad view on numerous aspects related to the performance of students. These sections contain tables and charts which have been constructed after an in-depth analysis of AMCAT assessment data collected from your campus. We evaluate your students' performance in comparison to the nation-wide norms, which are calculated from a sample of entry-level job-aspirants over 22 states across India. This comparison reveals those areas in which your students fare better (or otherwise) than the average student assessed by us, and determines the employability of the students in diverse industries. This report will give a clear picture of the employability status of students eligible for the listed companies and also help the institute to improve on the weak areas figured by Aspiring Minds' analysis.

We also provide an intra-campus analysis to give an overview of the characteristics of top performing students in comparison to the rest, such that appropriate measures can be taken to help the low performers fare better.

On the basis of our analysis, we suggest certain recommendations for your campus. We are certain that these recommendations will help Dr Ambedkar Institute of engineering march towards its goal of providing excellent education to the students, which will result in better employability. Our recommendations, if properly implemented, will also help increase the standing of the campus amongst prospective students.

Data Snapshot

Campus	Dr Ambedkar Institute of engineering
Date of testing	22nd August 2019
Degree tested	B.Tech/B.E (967 students)
Number of students compared in each stream	
Computer Science & Engineering	213 students
Information Science Engineering	48 students
Electronics and Communication Engineering	199 students
Electronics and Instrumentation Engineering	42 students
Telecommunication Engineering	45 students
Electronics and Electrical Engineering	71 students
Mechanical Engineering	172 students
Civil Engineering	113 students
Industrial & Production Engineering	33 students
Other	31 students

Note: some students either did not enter their stream or entered it incorrectly. These students have not been included in any stream. Thus total students tested could be more than students in all reported streams.

Introduction

This report is based on the results of AMCAT assessment conducted at your campus on 22nd August 2019 where a total of 967 students were tested. AMCAT is a two and half-hour adaptive test with multiple modules including aptitude, domain skills and personality assessment. It is India's largest employability test and is taken by more than 30,000 students every month. Being India's only adaptive employability test, it is used as a benchmark for hiring by several companies across India. The details of AMCAT assessment are as follows:

AMCAT Modules
I. English Comprehension
II. Quantitative Ability
III. Logical Ability
IV. Aspiring Minds Personality Inventory (AMPI)

I. English Comprehension

Familiarity with the English Language in its various nuances is an essential skill, especially in the current climate of global networking. Ideally, any recruitment should involve a test of skills in handling the language in ways that promote the objectives of the company. Needless to state, an appropriate test is necessary.

Our English test uses a variety of internationally standardized resources for framing questions aimed at determining the candidate's ability to a) understand the written text (b) comprehend the spoken word and (c) communicate effectively through written documents. The test broadly covers the following areas:

- a. A wide-ranging vocabulary to cope with general and specific terminology.
- b. Syntax and sentence structure, the incorrect use of which distorts meaning and becomes a communication hurdle.
- c. Comprehension exercises designed to test a candidate's ability to read fluently and understand correctly.
- d. The ability to understand and use suitable phrases, which enrich the meaning of what is conveyed.

Time management and accuracy in conformity with the examiner's criteria.

II. Quantitative Ability

The Quantitative Ability assesses the ability of the candidate in following two aspects:

- a. Basic understanding of numbers and applications
This section tests whether the candidate has understanding of basic number system, i.e., fractions, decimals, negative, positive, odd, even numbers, rational numbers, etc. The candidate should know how to do basic operations on these

numbers, understand concepts of factors/divisibility and have good practice of algebra. Apart from operations on numbers, the candidate should know how to convert a real-world problem into equations, which is to be solved to find an unknown quantity. The candidate is tested on Word Problems representing various scenarios to assess the same.

b. Analytical/Engineering Maths

These are aspects of mathematics needed for Engineering disciplines and data analysis. This includes permutation-combination, probability and understanding of logarithms.

III. Logical Ability

The Logical Ability section assesses the capacity of an individual to interpret things objectively, to be able to perceive and interpret trends to make generalizations and be able to analyze assumptions behind an argument/statement. These abilities are primary for success of a candidate in the industry. Specifically, these are divided into following sections:

- a. Deductive Reasoning: Assesses the ability to synthesize information and derive conclusions.
- b. Inductive Reasoning: Assesses the ability to learn by example, imitation or hit-and-trial. This also provides an indication of how creative the individual is.
- c. Subjective Reasoning: Assesses the critical thinking ability of an individual to see through loopholes in an argument or group of statements.

All these abilities are tested both using numerical and verbal stimuli. Coachable questions have been identified and removed.

IV. AMPI: Aspiring Minds Personality Inventory

It is the first personality inventory designed for personality analysis of Indian college graduates for the purpose of inputs to corporate personnel selection. AMPI is based on the five factor model, which is by far the only scientifically validated and reliable personality model. Several scientific studies across the world have shown that different combinations of the five factor personality traits strongly correlate to different job profiles and predict long term job performance reliably. AMPI analysis will be a worthwhile objective input to the corporate selection process and help find better matches to job profiles. The AMPI questionnaire asks for candidate's reaction under various scenarios, his/her beliefs, likes-dislikes to ascertain his/her personality factors. Factors map to traits such as candidate motivation, self-discipline, sociability, persistence, confidence, emotional stability, etc. which both intuitively and scientifically map to job requirements. AMPI builds in a strong proprietary methodology to control distortions due to social desirability and answer-faking.

AMPI has been designed specifically keeping the fresh Indian graduates in mind. Context is very important in design of items. AMPI items take into consideration the cultural sensibilities of Indians, the scenarios students face at college/home, also depending on the socio-economic status of the target population. This brings AMPI into a unique position as

compared to generic/Western inventories, which do not suit our target population and fail miserably.

AMPI's scoring is based on statistical techniques of factor analysis, polytomous item analysis and structural modeling. Norms have been set on large candidate assessment done on final year graduates. Testforms are auto-generated such that each factor can be reliably predicted in feasible amount of time. Test-retest reliability and test validity are statistically guaranteed.

AMPI traits are:

- a. Extraversion
- b. Conscientiousness
- c. Emotional Stability
- d. Openness to Experience
- e. Agreeableness

Score Interpretation

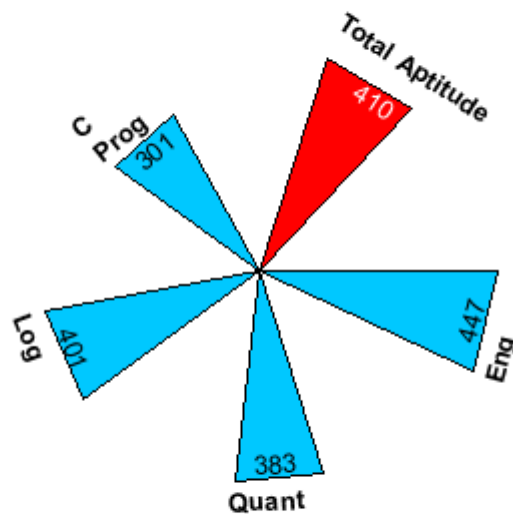
All scores lie between 100 and 900. The scores are normalized on a Gaussian curve using statistical techniques. The scores follow global standards of validity and reliability. They are valid for three years and remain consistent on repeat testing unless the candidate's ability improves because of sustained long term efforts.

Percentile Interpretation

The percentile of the candidate is calculated over a National average group based on the percentile of all students tested by Aspiring Minds. Several statistical studies conducted demonstrate clearly that the percentiles are stable for a year and will not vary more than two percentile points. The percentile is a very important metric and gives an idea of the candidate's rank in comparison with all graduates nationwide.

Section 1 - Students' Capability and Training Need Analysis

This section shows the overall performance of the campus students, along with their average and standard deviation in each module. In Campus Aptitude and Skill Chart below, BLUE triangles represent average score of your campus in each module. The RED triangle represents Total Aptitude score, which comprises of English, Quantitative Ability and Logical Ability scores.



Campus Aptitude And Skill Chart

The Campus Ability Table below shows the campus average scores (percentiles) and their standard deviations in comparison with the National norms. It also indicates if the difference between the Campus Average score and the National Average score is significant and if so, at what confidence level. Norm is the National Average of all the candidates tested on AMCAT. Confidence level refers to the likelihood (ranging from 0 to 100%) that the results observed in the study are real, and not due to chance. In this analysis, if confidence level is less than 90%, it indicates that the difference between the Campus Average and the National Average is not significant and that both the scores are equivalent. For confidence level greater than or equal to 90%, the difference between the Campus Average and the National Average is considered significant. If the difference is positive, on an average, the campus students are performing better than the National Average and vice versa.

Campus Ability Table

Modules Attempted	Campus Average Percentile	Campus Average (Std. Dev.)	National Average (Std. Dev.)	Difference (Campus - National)	Confidence	Is Significant? ¹
English Comprehension	39%	447 (106)	475 (100)	-28	100%	Yes
Quantitative Ability	17%	383 (125)	495 (115)	-112	100%	Yes
Logical Ability	26%	401 (78)	465 (101)	-64	100%	Yes
C Programming	11%	301 (94)	425 (101)	-124	100%	Yes
Total Aptitude	26%	410 (83)	478 (105)	-68	100%	Yes

¹ if confidence level is less than 90%, it indicates that the difference between Campus Average and National Average is not significant and that both the scores are equivalent.

I. Inferences

1. English Comprehension

Communication is the key to building relationships and trust that leads to success in business. English is a corporate language and hence, the ability to read and comprehend this language effectively is essential to qualify for all types of job profiles, whether it is technical or non-technical. Although the difference is not large, it is not very pleasing to find that the students of your institute, on an average, have scored **lower than the National Average** in English module. We sincerely believe that students can improve their English with a little more effort and dedication towards the language. By making English communication and reading a habit, students can improve their score to go beyond the National Average. The campus and the faculty also need to create a conducive environment, where students are encouraged to communicate in English.

2. Quantitative Ability

Quantitative Ability measures a person's ability to deal with numbers and real-world problems quantitatively and mathematically. It is the ability to convert a real world problem into equations which can then be solved to find the result. This module is designed to measure a candidate's basic maths and algebraic skills, his/her understanding of basic quantitative concepts and his/her ability to reason quantitatively, solve quantitative problems and interpret graphical data. In Quantitative Ability module, your campus has **not performed well and on an average, their scores are much lower than the National Average**. Your students should work on the understanding of basic concepts in this module. They should practice a variety of questions from all the areas of this module, gradually moving to higher difficulty levels.

3. Logical Ability

The purpose of Logical Ability module is to test students' logical reasoning skills and to check their intuitive ability, decision making capability, problem solving approach and other areas which are important from a company's perspective. People with strong Logical Reasoning are quicker to perceive and interpret things objectively. Therefore, proficiency in this module is desired for all job profiles. The performance of your students in **Logical Ability section is not up to the mark. On an average, the scores are way below the National Average.** Your institute has to take firm steps to ensure that the students perform well in this section. Students should practice logical puzzles and games of various kinds to improve their logical reasoning skills. The faculty should take sincere efforts to effectively build a strong foundation of logical reasoning in students.

II. Performance Summary

From the above analysis, it is clearly visible that the **performance of the students at your campus is not satisfactory in English Comprehension, Quantitative Ability and Logical Ability**, therefore additional training sessions and corrective measures are required by the campus authorities. Methodologies such as mock tests, assignments and extra classes can become a valuable strategy for the benefit of students. The campus can also include proactive mentoring sessions for weak students and review their skills in the given area(s). Another approach can be to hold training sessions focusing on comprehensive guidance for the students to excel in their weak areas. The gain resulting from these training sessions and your continuous support will allow overall development of the student and further enhancement in their abilities.

III. Training Suggestions

This section lists areas where your students need to improve on the basis of their performance in the AMCAT. For each module, according to the degree of improvement needed, appropriate suggestions have been provided.

Campus Training Requirement Table

Area to Improve Upon	Degree of Improvement	Suggestion
English Comprehension	Strong	Conduct tests and quizzes under time constraints which would help students judge their performance and further improve upon it. Encourage playing games like Scrabble, Crossword, etc. in order to improve their English vocabulary. You can try placing such word-games in the campus library. Conduct a number of mock tests and ensure that the students appear in each of these tests. This will help them to know where they actually stand.
Quantitative Ability	Very Strong	Time-honored mock tests should be conducted for the students so that they are able to judge themselves. Encourage pupils not to read mathematics, but to write and practice. That is the only way to learn mathematics. Real time problems on different topics should be extensively discussed to equip the students with different concepts.
Logical Ability	Very Strong	Advise students to develop their own notations so that they can represent the problem using proper symbols, diagrams etc. Include explicit training for reasoning skills to make the students practice different types of questions such as syllogism, blood relations, direction sense, pattern recognition, etc. Encourage students to solve different types of puzzles and questions which need logical thinking. Help them understand the problem clearly in their minds before they start solving it.

Section 2 - Students' Employability

This section gives you an approximate idea about the kind of companies your students are competent for. This section also provides an insight into the criteria used by different companies for their hiring process. Additionally, an estimate of the employability of your campus students in different sectors is mentioned. In order to improve employability prospects, domains in which your students need to focus their efforts are also listed.

I. Perspective on Corporate Shortlisting Criteria

In this section, we discuss the different kind of job profiles available for fresh graduates. For each domain, we discuss the nature of the job and the kinds of skills required to succeed in the particular job profile.

- **IT Services**

These types of service companies have large training setups of their own. They provide system integration solutions, software application development, testing solutions and many other services. For large services companies, Computer Programming score is not an important criterion. They look for candidates with acceptable English and Logical Reasoning along with strong Quantitative Ability skills. A good score in computer programming module is an advantage. HCL, TCS, Wipro, Satyam, Polaris etc are some of the major large scale service based companies.

- **ITeS and BPO**

Business process outsourcing companies can be aptly defined as those that act to utilize the services of a third party in order to perform its back office operations. The BPO market is forecast to hit \$450 billion by 2012. These companies look at moderate to outstanding/exceptionally good English, depending on whether they have national or international clients. The other parameters they use for short listing are acceptable Logical Reasoning and Computer skills. GE Capital, Convergys, Wipro Spectramind and Dell are some of the prominent BPO entities.

- **Hardware and Networking**

These companies specialize in Hardware and Network Support and basically provide integrated solutions for business enterprise applications, networking equipment and network management. That is they help manage organization's computing resources up and running. These companies primarily look for average quantitative and logical ability. Since the job does not include a lot of interaction with clients, they do not necessarily require good scores in English Comprehension. Cisco, Hewlett Packard, Nortel, NEC, Citrix and Netgear are some of the Hardware/Networking companies.

- **KPO/Analyst**

Knowledge Processing Outsourcing (popularly known as KPO) calls for the application of specialized domain pertinent knowledge. KPO business entities provide typical domain-based processes, advanced analytical skills and business expertise, rather than just process expertise. These companies look for an impressive command in English and sound knowledge in both Quantitative and Logical Reasoning. Evalueserve, Ugam Solutions, 24/7 Customer, ICICI OneSource, etc. are some of the leading KPOs in India.

II. Employability Prospects

The following table suggests the methods to be implemented in order to improve employability of your students with reference to particular job profiles. We have investigated what precise skills are deficient in students which make them unemployable. These skills need to be improved through efforts of the student and campus. Campus administration is requested to go through these suggestions and implement them to make students more employable.

Campus Job Match Table

Type of Company	Percentage of Students Eligible	Percentage of Students Need some training	Percentage of Students Need lot of training
IT Services	9.3%	8.5%	82.2%
ITeS and BPO	44%	6.8%	49.1%
Hardware and Networking	35.3%	12.6%	52.1%
KPO/Analyst	5.3%	24.6%	70.1%

III. Bird's-eye-view of Employability

The following table suggests the methods to be implemented in order to improve employability of your students for each type of company. These recommendations are provided on the basis of weak modules for each company, which the faculty should work on to help their students. Campus is requested to go through these suggestions and implement them to elevate the chances of getting placed in that particular company.

Campus Employability Enhancement Table

Type of Company	Campus Employability Prospect	Areas in Need of Training for Improving Employability Chances
IT Services	Low	These companies are basically looking for good English and Logical skills with average Quantitative ability. If employability prospects is to be increased for this industry, campus faculty will need to focus on English Comprehension, Quantitative Ability and Logical Ability.
ITeS and BPO	Medium	These companies look for candidates proficient in English with average Logical and Quantitative abilities. To increase the employability prospects for this industry, extra efforts are required by the campus authority on Quantitative Ability, Logical Ability and English Comprehension.
Hardware and Networking	Medium	These companies are basically looking for candidates with good English and average Logical abilities. For better employability prospects in this industry, your students need to focus on Logical Ability, Quantitative Ability and English Comprehension.
KPO/Analyst	Low	These companies look for candidates having proficiency in English with good Quantitative and Reasoning abilities. To increase the employability prospects for this industry, extra efforts are required by the campus authority on English Comprehension, Quantitative Ability and Logical Ability.

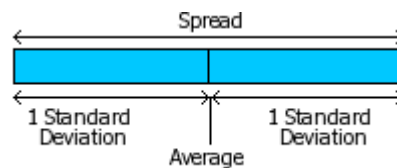
Section 3 - Intra Campus Comparison

In this section, we will compare assessment scores to create a comprehensive comparative analysis between different branches of a degree of your college. This section shall explain the competitiveness of students of each degree, branch and batch with others in the respective group.

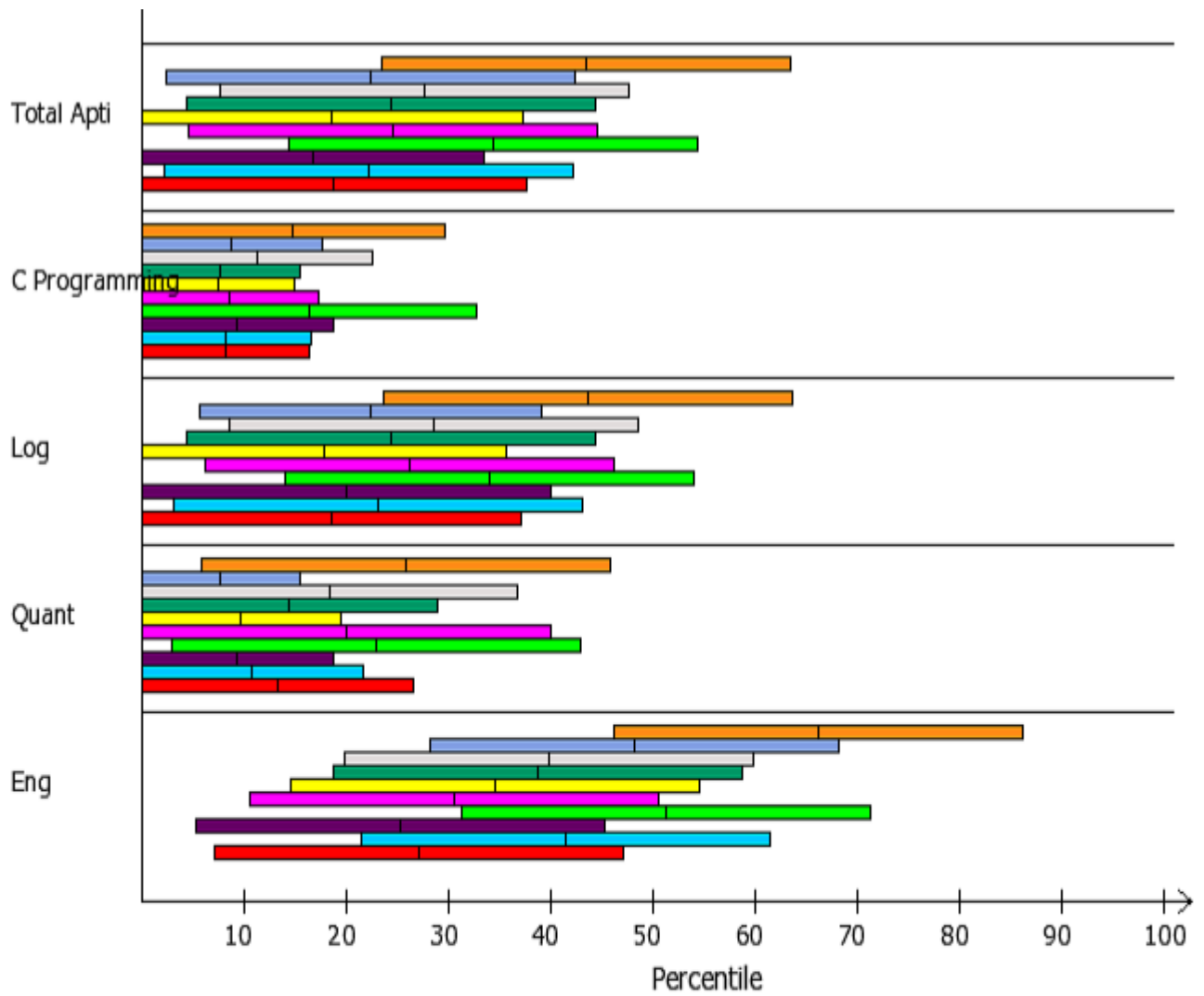
I. Stream Comparison

In this section, we compare the AMCAT scores of students categorized by their branch of study. Students from the following branches participated in AMCAT at your college.

1. Computer Science & Engineering
2. Information Science Engineering
3. Electronics and Communication Engineering
4. Electronics and Instrumentation Engineering
5. Telecommunication Engineering
6. Electronics and Electrical Engineering
7. Mechanical Engineering
8. Civil Engineering
9. Industrial & Production Engineering
10. Other



The chart below shows the comparison of module-wise average scores for each stream. To interpret the chart, refer to the above illustration. Each horizontal bar represents the average score along with the standard deviation of a particular branch in that module. The vertical line at the center of each bar represents the average score. The length of bar represents the range of scores obtained by students of that stream.



Note: color bands are in order.

For each module, the following table lists the top scoring streams. Only the modules which are common for all the streams have been considered in the table.

Top Scoring Streams For Each Module

Rank	English Comprehension	Quantitative Ability	Logical Ability	C Programming
1	Information Science Engineering	Information Science Engineering	Information Science Engineering	Computer Science & Engineering
2	Computer Science & Engineering	Computer Science & Engineering	Computer Science & Engineering	Information Science Engineering

Note: streams with less than 5 students have not been considered for the analysis.

On the basis of AMCAT scores obtained by different streams in your campus, we make following inferences -

1. English Comprehension

Information Science Engineering students have shown that they are the best when it comes to English Comprehension. **Computer Science & Engineering students follow them** with a difference of 14.79 percentile points while **Civil Engineering students are the last in the order** with a difference of 40.93 percentile points. Mechanical Engineering, Other, Civil Engineering, Electronics and Electrical Engineering, Electronics and Instrumentation Engineering, Telecommunication Engineering, Electronics and Communication Engineering and Industrial & Production Engineering students have not performed up to the mark when compared to the National Average. On the brighter side, Computer Science & Engineering and Information Science Engineering students have done well with respect to the National Average.

2. Quantitative Ability

In Quantitative Ability **Information Science Engineering students are the top scorers, their average score exceeding that of Computer Science & Engineering** by 2.89 percentile points while **Industrial & Production Engineering students are the lowest scorers**. Also, consider that all the streams, on an average, have scored low in comparison to the National Average.

3. Logical Ability

When it comes to Logical Ability, **Information Science Engineering students have grabbed the top position** among all streams. **Electronics and Instrumentation Engineering are the last rankers** with a difference of 25.75 percentile points. Also, note that all the streams have scored poorly in comparison to the National Average.

4. C Programming

Computer Science & Engineering students have shown that they are the best when it comes to C Programming. **Information Science Engineering students follow them** with a difference of 1.46 percentile points while **Electronics and Instrumentation Engineering students are the last in the order** with a difference of 8.9 percentile points. When compared to the National Average, all the streams have underperformed in this section.

In your campus, **Information Science Engineering stream performed outstandingly well in maximum number of modules.** Also, Electronics and Instrumentation Engineering stream performed poorly in maximum number of modules in comparison to other streams, and therefore need special attention.

Aspiring Minds' Concluding Words

To summarize the overall analysis of your campus done by Aspiring Minds, key-points from all sections are highlighted below:

- The performance of the B.Tech/B.E students in your campus is **not satisfactory in English Comprehension, Quantitative Ability and Logical Ability**, therefore additional training sessions and corrective measures are required by the campus authorities.
- It is clearly evident that **44% and 35.3%** of your students are eligible to work in **ITeS and BPO and Hardware and Networking** which is good, however **9.4% and 5.3%** of your students are eligible to work in **IT Services and KPO/Analyst** respectively which is an area of concern.
- In your campus, **Information Science Engineering stream performed outstandingly well in maximum number of modules**. Also, Electronics and Instrumentation Engineering stream performed poorly in maximum number of modules in comparison to other streams, and therefore need special attention.

The strongest recommendation Aspiring Minds will like to give is initiation of classes to improve the weak areas of candidates. Apart from classes, regular quizzes and special training sessions should also be initiated, where students answer questions under time constraints. The classes should be student-friendly so that the students are open to questions and are free to ask their doubts. Peer teaching can be another way to increase the learning of students in the class

Along with increasing the employability of the institute, this will help your students compete with other candidates in a more effective and efficient way. With regard to areas where your students scored well, a sustained effort is needed. Regular assignments of problems should be given so that the students can accelerate their performance.

We strongly request the campus authorities to direct all students to follow the performance feedback given by Aspiring Minds based on their AMCAT scores. The campus authorities can go a long way in reminding students about their strengths and weaknesses, thus encouraging them to uphold their strengths and improve on their weaknesses. Consider special classes, better teaching processes and focused courses so that students get a good platform to improve and perform. We also strongly suggest conducting AMCAT again at campus after 4 months of dedicated hard work by students and campus authorities. This shall give students a benchmark to improve themselves, and help us understand if the initiated training program was useful. Of course, it would help students as well, with better scores leading to better job opportunities.

We thank Dr Ambedkar Institute of engineering for giving us an opportunity to conduct AMCAT in their campus. For any clarification or further analysis, we can be contacted at campus@aspiringminds.in or (91) 124 4148777.

Appendix

I. Candidates Score Table

The Candidates score table below shows the scores and percentile of all the students of your campus tested on AMCAT. All scores lie between 100 and 900.

AMCAT ID	Name	AMCAT Score, Percentile							
		English Comprehension		Quantitative Ability		Logical Ability		C Programming	
158471019232707	A Reshma	405	28 %	195	1 %	315	7 %	260	5 %
158471019547271	A Soppia Anandan	525	69 %	520	69 %	395	24 %	260	5 %
158471019274725	Aakriti Sah	350	14 %	300	9 %	325	8 %	420	48 %
158471019505927	Aamir Raza	370	18 %	400	31 %	-	-	313	13 %
158471019024884	Abbas Ali H Abbas Ali H	325	9 %	150	0 %	310	6 %	367	28 %
158471019943589	Abhijith Ashok	535	72 %	370	22 %	310	6 %	207	2 %
158471019436099	Abhilash Hs	290	5 %	300	9 %	370	17 %	207	2 %
158471019586696	Abhishek A	560	79 %	300	9 %	510	67 %	367	28 %
158471019170701	Abhishek Gautam	650	95 %	695	97 %	555	81 %	367	28 %
158471019098583	Abhishek T K	405	28 %	490	60 %	445	42 %	153	0 %
158471019569226	Abhishek Sannagoudru	280	4 %	460	50 %	325	8 %	260	5 %
158471019855890	Abhishek M	440	39 %	370	22 %	420	33 %	207	2 %
158471019351261	Abhishek Patil	280	4 %	270	6 %	200	0 %	313	13 %
158471019831086	Abhishek Pasumarthi	745	99 %	400	31 %	485	58 %	260	5 %
158471019630275	Abhishek S	455	45 %	740	99 %	470	52 %	153	0 %
158471019129703	Abhishek H B	455	45 %	415	35 %	410	29 %	153	0 %
158471019428039	Abhishek.n Abhi	300	10 %	285	11 %	335	18 %	260	5 %
158471019609709	Abyakta Koirala	615	91 %	430	40 %	520	71 %	473	68 %
158471019578336	Adarsh A H	545	75 %	415	35 %	530	74 %	313	13 %
158471019288030	Adarsh Hegde	500	61 %	355	19 %	445	42 %	207	2 %
158471019454861	Adesh Adesh	385	22 %	300	9 %	395	24 %	260	5 %
158471019891305	Adithya S K	335	11 %	490	60 %	470	52 %	313	13 %
158471019538326	Aditya K	500	61 %	560	80 %	395	24 %	260	5 %
158471019415143	Aditya Srinivasa	675	97 %	415	35 %	360	15 %	260	5 %
158471019598940	Aditya Sharma	580	84 %	-	-	505	65 %	367	28 %
158471019422477	Aditya Savalgi	490	57 %	560	80 %	545	79 %	260	5 %
158471019610644	Aditya Rouniyar	640	94 %	445	45 %	460	48 %	313	13 %
158471019676867	Aditya R	300	6 %	400	31 %	460	48 %	420	48 %
158471019554609	Aditya Tiwari	545	75 %	635	93 %	530	74 %	313	13 %
158471019197807	Aishwarya Lakshmi Kb	455	45 %	325	13 %	375	19 %	207	2 %
158471019440958	Aishwarya Ravikumar	595	87 %	385	26 %	530	74 %	473	68 %
158471019722051	Aishwarya R	525	69 %	325	13 %	445	42 %	527	84 %
158471019562482	Aishwarya Singhe	525	91 %	300	15 %	350	22 %	313	13 %
158471019893386	Aishwarya Kamakodi	570	82 %	550	77 %	445	42 %	313	13 %

AMCAT ID	Name	AMCAT Score, Percentile							
		English Comprehension		Quantitative Ability		Logical Ability		C Programming	
158471019955780	Aishwarya S.p	420	55 %	370	35 %	400	37 %	260	5 %
158471019362125	Aishwarya S A	455	45 %	310	10 %	360	15 %	527	84 %
158471019101563	Aishwarya Dn	370	18 %	150	0 %	350	13 %	313	13 %
158471019098300	Ajay Kumber	580	84 %	490	60 %	495	62 %	313	13 %
158471019199969	Ajay S	370	18 %	520	69 %	455	46 %	313	13 %
158471019644682	Ajay S	395	25 %	490	60 %	385	21 %	207	2 %
158471019179114	Ajay B R	335	11 %	340	16 %	400	26 %	473	68 %
158471019655167	Ajay V	630	93 %	520	69 %	455	46 %	313	13 %
158471019650882	Ajith Kumar	405	48 %	340	25 %	370	27 %	367	28 %
158471019622121	Akanksha Kr	455	45 %	400	31 %	455	46 %	260	5 %
158471019344158	Akash S	420	32 %	400	31 %	420	33 %	367	28 %
158471019143116	Akash Reddy	385	22 %	310	10 %	360	15 %	207	2 %
158471019526451	Akash Bijjal	265	3 %	310	10 %	275	3 %	260	5 %
158471019062997	Akash O R	430	36 %	535	73 %	420	33 %	260	5 %
158471019454167	Akash M	370	18 %	400	31 %	290	4 %	313	13 %
158471019526028	Akash Halappareddi Doddamani Doddamani	525	69 %	180	1 %	335	10 %	260	5 %
158471019683915	Akhilesh S	405	28 %	550	77 %	480	56 %	367	28 %
158471019798772	Akshatha Selvabharathi	440	39 %	370	22 %	370	17 %	153	0 %
158471019295400	Akshatha S P S P	385	22 %	370	22 %	375	19 %	260	5 %
158471019188863	Akshay T	395	25 %	415	35 %	335	10 %	153	0 %
158471019092638	Akshay C	395	25 %	255	4 %	370	17 %	260	5 %
158471019868067	Akshay K	420	32 %	370	22 %	335	10 %	260	5 %
158471019756075	Akshay Prasad	605	89 %	460	50 %	410	29 %	313	13 %
158471019972552	Akshaya K	490	57 %	575	83 %	480	56 %	207	2 %
158471019403156	Akshaykumar Melinamani	405	28 %	370	22 %	420	33 %	207	2 %
158471019642567	Alok Rathore	420	32 %	325	13 %	435	38 %	367	28 %
158471019582069	Aluru Reddy	360	16 %	370	22 %	400	26 %	527	84 %
158471019699301	Aman S	475	52 %	550	77 %	425	35 %	420	48 %
158471019256204	Amar N S	560	79 %	475	55 %	485	58 %	420	48 %
158471019961031	Ambika Vijapur	265	3 %	415	35 %	425	35 %	153	0 %
158471019661370	Amit Patel	315	8 %	240	3 %	400	26 %	367	28 %
158471019425681	Amit Somanath	350	14 %	210	2 %	255	2 %	367	28 %
158471019154519	Amith Hiremath	475	52 %	385	26 %	470	52 %	153	0 %
158471019989836	Amogh Aradhya	570	82 %	300	9 %	425	35 %	260	5 %
158471019677266	Amogha S	525	69 %	370	22 %	400	26 %	207	2 %
158471019046870	Amrutha Bp	675	97 %	575	83 %	460	48 %	367	28 %
158471019081708	Amshith Aithal	360	16 %	490	60 %	410	29 %	260	5 %
158471019903329	Anagha Ajoykumar	630	93 %	680	97 %	540	77 %	473	68 %
158471019373895	Anagha Anand	595	87 %	550	77 %	460	48 %	367	28 %
158471019238854	Ananya Athray	615	91 %	400	31 %	420	33 %	260	5 %
158471019859455	Ananya Shetty	510	64 %	400	31 %	410	29 %	420	48 %
158471019078924	Anil Kumar K L Kumar	300	6 %	370	22 %	335	10 %	313	13 %
158471019004327	Anjali Khadme	315	8 %	385	26 %	300	5 %	313	13 %

AMCAT ID	Name	AMCAT Score, Percentile							
		English Comprehension		Quantitative Ability		Logical Ability		C Programming	
158471019513901	Anjan Thapa	535	72 %	310	10 %	310	6 %	260	5 %
158471019580967	Ankit Kafle	490	57 %	535	73 %	425	35 %	313	13 %
158471019099918	Ankita Gouda	580	84 %	460	50 %	520	71 %	420	48 %
158471019723718	Ankitha Bhat	560	79 %	415	35 %	410	29 %	420	48 %
158471019359497	Ankush N	290	5 %	300	9 %	410	29 %	207	2 %
158471019463968	Annapoorna B	490	57 %	385	26 %	385	21 %	367	28 %
158471019581647	Anupama Umesh	280	4 %	-	-	395	24 %	367	28 %
158471019797267	Anusha Gowda	545	75 %	-	-	375	19 %	313	13 %
158471019171912	Anusha D	490	57 %	490	60 %	460	48 %	100	0 %
158471019514097	Anusha C S	430	36 %	445	45 %	480	56 %	367	28 %
158471019476725	Anusha Balehola	615	91 %	400	31 %	420	33 %	153	0 %
158471019532355	Anusha U N	455	45 %	270	6 %	425	35 %	260	5 %
158471019879479	Anusha B	420	32 %	225	2 %	370	17 %	367	28 %
158471019255562	Anusha S	560	79 %	385	26 %	455	46 %	313	13 %
158471019033268	Anushree M	370	18 %	385	26 %	385	21 %	153	0 %
158471019759583	Anushree P V	350	14 %	355	19 %	325	8 %	260	5 %
158471019563605	Aravind Rajasekhar	475	78 %	240	5 %	340	19 %	153	0 %
158471019058077	Arcot Seshan	570	82 %	325	13 %	470	52 %	313	13 %
158471019546201	Arpitha G.r	490	57 %	225	2 %	375	19 %	207	2 %
158471019574475	Arun .s	385	22 %	300	9 %	285	4 %	313	13 %
158471019893152	Arun Kumar Belamge	685	97 %	355	19 %	570	85 %	313	13 %
158471019900272	Ashalata Baragi	490	57 %	165	1 %	375	19 %	260	5 %
158471019175482	Ashish M U	560	79 %	475	55 %	485	58 %	313	13 %
158471019305442	Ashish Kumar	430	36 %	505	64 %	360	15 %	420	48 %
158471019635731	Ashish Sah	570	82 %	400	31 %	410	29 %	367	28 %
158471019035839	Ashoka R	255	3 %	150	0 %	400	26 %	207	2 %
158471019012223	Ashray K B	570	82 %	665	96 %	580	87 %	367	28 %
158471019210977	Ashwin Poojary	490	57 %	-	-	385	21 %	260	5 %
158471019250923	Ashwini H	405	28 %	285	7 %	495	62 %	367	28 %
158471019389427	Ashwini M	370	18 %	340	16 %	410	29 %	260	5 %
158471019152538	Ashwini N Ashwini N	430	36 %	430	40 %	470	52 %	207	2 %
158471019656877	Asif Saliya	490	57 %	415	35 %	510	67 %	153	0 %
158471019913354	Asma S	500	61 %	430	40 %	455	46 %	207	2 %
158471019790041	Avinash J	430	36 %	240	3 %	300	5 %	473	68 %
158471019987667	Avinash N	335	11 %	105	0 %	230	1 %	207	2 %
158471019148804	Avinash K K	360	16 %	255	4 %	395	24 %	207	2 %
158471019410162	Azmath Ikram	490	57 %	475	55 %	470	52 %	313	13 %
158471019033355	B Laltharliani	465	48 %	325	13 %	385	21 %	313	13 %
158471019515751	B M Pavan	440	39 %	475	55 %	300	5 %	313	13 %
158471019060287	B R Sathish Keerthi	350	14 %	270	6 %	250	2 %	313	13 %
158471019057875	B.sangeetha Reddy	475	52 %	535	73 %	400	26 %	260	5 %
158471019470959	Balaji Gorkal	420	32 %	520	69 %	480	56 %	527	84 %
158471019747604	Balaji Balaji Am	370	18 %	415	35 %	325	8 %	260	5 %
158471019114962	Bandhavva Sm Sm	-	-	210	2 %	340	11 %	367	28 %
158471019887610	Basanagouda Karigoudra	440	39 %	415	35 %	395	24 %	313	13 %

AMCAT ID	Name	AMCAT Score, Percentile							
		English Comprehension		Quantitative Ability		Logical Ability		C Programming	
158471019666106	Basavaprabhu S R S R	325	9 %	310	10 %	385	21 %	260	5 %
158471019705968	Basavaraj Patil	335	11 %	-	-	370	17 %	207	2 %
158471019241122	Basavaraju M Raju	300	6 %	180	1 %	325	8 %	367	28 %
158471019905866	Bhaavana S	475	52 %	400	31 %	420	33 %	260	5 %
158471019250053	Bhagyashree Bacha	350	14 %	340	16 %	360	15 %	473	68 %
158471019307142	Bhanavi Gowda	580	84 %	310	10 %	480	56 %	153	0 %
158471019011734	Bharath H U	395	25 %	535	73 %	445	42 %	260	5 %
158471019270644	Bharath Hn	325	9 %	370	22 %	400	26 %	420	48 %
158471019015503	Bharath .g	405	28 %	285	7 %	250	2 %	367	28 %
158471019257620	Bharathesh T	475	52 %	340	16 %	350	13 %	367	28 %
158471019212617	Bharatkumar Muddebihal	315	8 %	490	60 %	445	42 %	313	13 %
158471019215237	Bhargav B	545	75 %	-	-	425	35 %	580	94 %
158471019372281	Bhargavi Hegde	465	48 %	385	26 %	360	15 %	153	0 %
158471019538821	Bhaskar Achari	335	19 %	560	93 %	375	29 %	313	13 %
158471019442002	Bhavana N R	385	22 %	430	40 %	400	26 %	420	48 %
158471019660076	Bhavana A Bhavana	280	6 %	225	4 %	190	1 %	420	48 %
158471019445944	Bhavani T R	395	25 %	505	64 %	395	24 %	100	0 %
158471019408582	Bheemappa Awari	405	28 %	195	1 %	395	24 %	313	13 %
158471019820473	Bhima Shankar	325	16 %	355	30 %	325	15 %	313	13 %
158471019637671	Bhoomika Shastry	615	91 %	490	60 %	565	84 %	260	5 %
158471019406480	Bhoomika G.h	525	69 %	385	26 %	445	42 %	313	13 %
158471019273911	Bhuvan M	455	45 %	255	4 %	385	21 %	153	0 %
158471019992281	Bibek Bhattarai	440	39 %	255	4 %	325	8 %	420	48 %
158471019546173	Bibijan Araganji	335	11 %	355	19 %	340	11 %	367	28 %
158471019932585	Bikash Kunwar	430	36 %	355	19 %	325	8 %	260	5 %
158471019910864	Bindushree H	430	36 %	355	19 %	360	15 %	260	5 %
158471019637420	Bipin Poudel	510	64 %	430	40 %	400	26 %	420	48 %
158471019035899	Biradar Vaibhav Biradar	510	64 %	505	64 %	395	24 %	100	0 %
158471019627319	Bishwash Sah	535	72 %	415	35 %	290	4 %	260	5 %
158471019577989	Blessy Catherine R	665	96 %	490	60 %	455	46 %	313	13 %
158471019923445	Brunnda G	370	18 %	240	3 %	395	24 %	207	2 %
158471019858960	Bruntha P	440	64 %	210	3 %	310	12 %	367	28 %
158471019752524	Chaitanya P	325	16 %	355	30 %	250	4 %	207	2 %
158471019344584	Chaithra Kn	370	18 %	430	40 %	360	15 %	153	0 %
158471019875667	Chaithra Kl	395	25 %	385	26 %	435	38 %	313	13 %
158471019408791	Chaitra Shree	455	45 %	325	13 %	300	5 %	260	5 %
158471019818379	Chandan S	395	25 %	-	-	-	-	260	5 %
158471019013490	Chandan B S	395	25 %	225	2 %	275	3 %	260	5 %
158471019430249	Chandan K S	455	45 %	370	22 %	325	8 %	313	13 %
158471019445211	Chandan Shetty	405	28 %	620	91 %	350	13 %	207	2 %
158471019963882	Chandana N	580	84 %	590	86 %	485	58 %	207	2 %
158471019283178	Chandana K	735	99 %	-	-	470	52 %	420	48 %
158471019777185	Chandana Shree.a	525	69 %	340	16 %	435	38 %	313	13 %
158471019758344	Chandana G	360	16 %	355	19 %	495	62 %	313	13 %

AMCAT ID	Name	AMCAT Score, Percentile							
		English Comprehension		Quantitative Ability		Logical Ability		C Programming	
158471019834428	Chandana V	440	39 %	400	31 %	395	24 %	313	13 %
158471019134013	Chandana N	500	61 %	255	4 %	485	58 %	207	2 %
158471019322710	Chandana L	420	32 %	120	0 %	460	48 %	207	2 %
158471019947876	Chandana R R	325	9 %	340	16 %	395	24 %	260	5 %
158471019508844	Chandra Cb	430	36 %	180	1 %	315	7 %	367	28 %
158471019225626	Chandrakala P	350	14 %	340	16 %	370	17 %	527	84 %
158471019441429	Chandru L	440	39 %	460	50 %	385	21 %	367	28 %
158471019885038	Channabasava H	350	14 %	370	22 %	400	26 %	207	2 %
158471019781329	Charan B U	510	64 %	310	10 %	285	4 %	260	5 %
158471019500463	Charan K N	265	3 %	370	22 %	425	35 %	313	13 %
158471019221998	Charan H K	325	9 %	415	35 %	300	5 %	260	5 %
158471019805745	Charan Sb	385	38 %	340	25 %	340	19 %	260	5 %
158471019179864	Chaya H T	335	19 %	240	5 %	310	12 %	260	5 %
158471019474874	Chetana Desai	535	72 %	415	35 %	410	29 %	473	68 %
158471019657925	Chetankumar Kc	455	45 %	505	64 %	445	42 %	207	2 %
158471019412513	Chethan L Lokesh	455	70 %	460	68 %	395	36 %	367	28 %
158471019952944	Chinmaya M	745	99 %	400	31 %	400	26 %	313	13 %
158471019415931	Chinmaya R N	560	79 %	370	22 %	505	65 %	260	5 %
158471019712457	Chinmayee B H	640	94 %	755	99 %	570	85 %	527	84 %
158471019293380	Christopher Rosario	700	100 %	650	99 %	470	63 %	260	5 %
158471019583355	D Riyaa	395	25 %	300	9 %	375	19 %	260	5 %
158471019296966	D.m.srujan Gowda	475	52 %	355	19 %	425	35 %	207	2 %
158471019435274	Darshan H K	545	75 %	370	22 %	615	93 %	207	2 %
158471019042564	Darshan Sr	440	39 %	415	35 %	485	58 %	207	2 %
158471019578749	Darshan V	430	36 %	240	3 %	425	35 %	260	5 %
158471019361610	Darshan C R	370	18 %	285	7 %	350	13 %	260	5 %
158471019386727	Darshan L	440	39 %	445	45 %	290	4 %	260	5 %
158471019049556	Darshan Darshu	350	24 %	270	9 %	265	6 %	367	28 %
158471019591801	Dattatri Gubyale	385	22 %	475	55 %	505	65 %	260	5 %
158471019044358	Dayananda M B M B	385	22 %	400	31 %	435	38 %	207	2 %
158471019012972	Deeksha M	500	61 %	680	97 %	530	74 %	260	5 %
158471019016160	Deepa B	615	99 %	310	17 %	445	54 %	367	28 %
158471019107363	Deepak T V	510	64 %	340	16 %	480	56 %	313	13 %
158471019024897	Deepanjali N S	360	16 %	370	22 %	385	21 %	367	28 %
158471019109414	Deepika Wodeyar	385	22 %	210	2 %	350	13 %	260	5 %
158471019102807	Deepthi Naik	525	69 %	430	40 %	335	10 %	153	0 %
158471019203173	Devaraj M	265	3 %	355	19 %	435	38 %	153	0 %
158471019759184	Devika D	605	89 %	665	96 %	445	42 %	313	13 %
158471019015584	Dhanush P	395	25 %	370	22 %	480	56 %	207	2 %
158471019388614	Dharani D	605	89 %	400	31 %	435	38 %	260	5 %
158471019645222	Dheeraj Patil	385	22 %	415	35 %	350	13 %	313	13 %
158471019302412	Digvijay Heralage	430	36 %	370	22 %	435	38 %	420	48 %
158471019503434	Dilip Kumar K	395	25 %	195	1 %	340	11 %	260	5 %
158471019661237	Dinakar M S	395	25 %	430	40 %	360	15 %	367	28 %
158471019544536	Dinesha C S	360	16 %	300	9 %	485	58 %	260	5 %
158471019555470	Dishant Tanwar	545	75 %	415	35 %	435	38 %	153	0 %

AMCAT ID	Name	AMCAT Score, Percentile							
		English Comprehension		Quantitative Ability		Logical Ability		C Programming	
158471019455621	Divya Dharshini	420	55 %	240	5 %	290	9 %	313	13 %
158471019761488	Divya Talekar	385	38 %	300	15 %	340	19 %	207	2 %
158471019722708	Divya Patil	525	69 %	635	93 %	420	33 %	260	5 %
158471019161254	Divya .	665	96 %	385	26 %	445	42 %	313	13 %
158471019628134	Divya U	455	45 %	-	-	435	38 %	207	2 %
158471019977098	Divyanshu Bhaskar	405	28 %	560	80 %	435	38 %	260	5 %
158471019922036	Divyashree R	560	96 %	385	41 %	435	50 %	367	28 %
158471019565453	Dummy S	-	-	-	-	-	-	153	0 %
158471019425846	Dushyanth M	315	8 %	285	7 %	285	4 %	260	5 %
158471019295248	Ekta Singh	420	32 %	550	77 %	400	26 %	260	5 %
158471019407305	Emilda .	465	48 %	210	2 %	455	46 %	207	2 %
158471019808023	Fali Sah	405	28 %	355	19 %	335	10 %	473	68 %
158471019610478	G M Makam	405	28 %	340	16 %	360	15 %	260	5 %
158471019404176	G Rashmi Rashmi	405	28 %	325	13 %	315	7 %	313	13 %
158471019949389	G.t Gagan Reddy	385	22 %	340	16 %	435	38 %	260	5 %
158471019797832	Gagana S N	500	61 %	225	2 %	455	46 %	207	2 %
158471019404360	Gagana R	605	89 %	300	9 %	485	58 %	367	28 %
158471019733628	Gagana K	510	64 %	475	55 %	375	19 %	527	84 %
158471019768531	Gagana Ac	335	19 %	195	2 %	410	41 %	313	13 %
158471019516733	Gajan A B	385	22 %	430	40 %	250	2 %	367	28 %
158471019117753	Gajanan Shanbhag	605	89 %	520	69 %	445	42 %	260	5 %
158471019204805	Ganapathi S	500	61 %	370	22 %	520	71 %	260	5 %
158471019096609	Ganavi H P H P	500	61 %	430	40 %	350	13 %	420	48 %
158471019345165	Gangadhara N P	350	14 %	270	6 %	470	52 %	313	13 %
158471019732932	Gangubai Kanajikar	405	28 %	300	9 %	360	15 %	313	13 %
158471019734237	Gaurav N Kawale	430	36 %	460	50 %	425	35 %	473	68 %
158471019045928	Gayathri B	370	18 %	400	31 %	385	21 %	207	2 %
158471019569301	Geetha.p Gowda	395	25 %	520	69 %	420	33 %	313	13 %
158471019650108	Geethanjali D D	290	8 %	135	0 %	285	8 %	207	2 %
158471019484207	Gireesha T R	420	32 %	445	45 %	495	62 %	260	5 %
158471019375526	Girish Kv	360	16 %	300	9 %	350	13 %	207	2 %
158471019982680	Gopika R	465	74 %	225	4 %	315	13 %	153	0 %
158471019659394	Gourishankar Patil	395	25 %	355	19 %	395	24 %	153	0 %
158471019943518	Goutham G R	605	89 %	325	13 %	395	24 %	207	2 %
158471019141062	Goutham Hm	580	84 %	285	7 %	510	67 %	260	5 %
158471019738815	Goutham H J	385	22 %	325	13 %	420	33 %	367	28 %
158471019806470	Gouthami J P	500	61 %	460	50 %	420	33 %	207	2 %
158471019885073	Govardan Yadav P K	370	18 %	400	31 %	445	42 %	313	13 %
158471019070662	Govardan K	325	9 %	285	7 %	325	8 %	367	28 %
158471019017343	Gowda V P	465	48 %	695	97 %	470	52 %	367	28 %
158471019943023	Gowtham Km	490	57 %	605	88 %	480	56 %	207	2 %
158471019081727	Greeshma G	525	69 %	400	31 %	335	10 %	313	13 %
158471019084991	Guru U S	430	36 %	415	35 %	485	58 %	260	5 %
158471019698971	Guru Prasad	475	52 %	210	2 %	370	17 %	313	13 %
158471019535276	Guruprasad Kn	195	1 %	100	0 %	310	12 %	207	2 %

AMCAT ID	Name	AMCAT Score, Percentile							
		English Comprehension		Quantitative Ability		Logical Ability		C Programming	
158471019446669	Guruputrappa Biswagar	230	2 %	120	0 %	335	18 %	313	13 %
158471019343530	Gururaj L	385	38 %	225	4 %	420	44 %	260	5 %
158471019833387	Gururaj Pyati	360	16 %	325	13 %	310	6 %	153	0 %
158471019369654	H Daksha Swaroop	440	39 %	415	35 %	315	7 %	260	5 %
158471019109323	H R Harshitha	700	98 %	550	77 %	495	62 %	473	68 %
158471019913039	Hajra Muskan K	335	11 %	210	2 %	350	13 %	260	5 %
158471019795589	Hamsa D	385	22 %	460	50 %	360	15 %	367	28 %
158471019667822	Hareesh Talikoti	420	32 %	300	9 %	400	26 %	313	13 %
158471019554735	Harika Pabbathi	440	39 %	370	22 %	375	19 %	313	13 %
158471019506193	Haripriya V M	640	94 %	400	31 %	350	13 %	313	13 %
158471019532637	Harish Hari	265	4 %	355	30 %	370	27 %	207	2 %
158471019425773	Harish Dg Harish	290	5 %	325	13 %	300	5 %	313	13 %
158471019358940	Harisha L	370	18 %	475	55 %	335	10 %	473	68 %
158471019292144	Harishmurthy K	455	45 %	475	55 %	460	48 %	260	5 %
158471019285953	Harsha R	535	72 %	460	50 %	520	71 %	260	5 %
158471019607874	Harsha P	605	89 %	635	93 %	555	81 %	207	2 %
158471019474326	Harsha K V	465	48 %	340	16 %	410	29 %	313	13 %
158471019567213	Harsha Choudhary	615	91 %	575	83 %	520	71 %	260	5 %
158471019767961	Harsha D	420	32 %	370	22 %	335	10 %	313	13 %
158471019404571	Harshit Md	455	45 %	505	64 %	485	58 %	313	13 %
158471019060191	Harshith S	465	48 %	225	2 %	385	21 %	153	0 %
158471019859334	Harshith R	430	36 %	370	22 %	315	7 %	153	0 %
158471019131278	Harshitha L S	595	87 %	460	50 %	470	52 %	313	13 %
158471019313151	Harshitha Venkatachala	465	48 %	430	40 %	435	38 %	313	13 %
158471019592359	Harshitha N	650	95 %	475	55 %	385	21 %	153	0 %
158471019526335	Harshitha D	595	87 %	285	7 %	410	29 %	207	2 %
158471019297089	Harshitha M S M S	535	72 %	255	4 %	425	35 %	313	13 %
158471019846840	Harshitha Mg Mg	405	48 %	270	9 %	265	6 %	260	5 %
158471019432982	Harshitha.m.s M.s	420	32 %	490	60 %	495	62 %	367	28 %
158471019278949	Heena M	325	16 %	255	7 %	360	24 %	313	13 %
158471019000294	Hemalatha M	325	9 %	300	9 %	480	56 %	260	5 %
158471019423250	Hemalatha N J	255	3 %	120	0 %	400	37 %	207	2 %
158471019400933	Hemanthkuamr S	370	18 %	340	16 %	485	58 %	367	28 %
158471019760200	Hemraj H	370	18 %	340	16 %	455	46 %	527	84 %
158471019958887	Hemika Satish	560	79 %	-	-	435	38 %	207	2 %
158471019620902	Himaraj Naduvinmani	265	4 %	300	15 %	290	9 %	313	13 %
158471019116740	Hiremth Prabhuswami	465	74 %	520	85 %	170	1 %	260	5 %
158471019718224	Hrshikesh Sonavane	640	94 %	475	55 %	-	-	260	5 %
158471019538678	Hrshikesh Gowda	500	61 %	460	50 %	340	11 %	420	48 %
158471019468286	Huchcha Reddy	430	36 %	150	0 %	360	15 %	313	13 %
158471019978229	Inchara K S	510	64 %	490	60 %	495	62 %	260	5 %

AMCAT ID	Name	AMCAT Score, Percentile							
		English Comprehension		Quantitative Ability		Logical Ability		C Programming	
158471019685140	Indira Patgar	510	64 %	285	7 %	340	11 %	420	48 %
158471019716881	J Padmashree Padmashree	360	16 %	210	2 %	370	17 %	260	5 %
158471019096682	Jagada Mahesh	370	18 %	460	50 %	395	24 %	207	2 %
158471019221734	Jagadish Mr	440	39 %	340	16 %	360	15 %	367	28 %
158471019614141	Jagannath Panchal	350	14 %	300	9 %	285	4 %	153	0 %
158471019983210	Jagruth S	650	95 %	400	31 %	370	17 %	420	48 %
158471019792384	Jalaja M Jalaja M	395	25 %	270	6 %	485	58 %	367	28 %
158471019385863	Jayam Surendra Sindhu	360	16 %	430	40 %	470	52 %	207	2 %
158471019168351	Jayanth Br	325	9 %	325	13 %	510	67 %	207	2 %
158471019858841	Jayanth N	510	64 %	415	35 %	470	52 %	207	2 %
158471019106270	Jayanth Kumar K	455	45 %	535	73 %	485	58 %	260	5 %
158471019265033	Jayaprakash Joshi	350	14 %	240	3 %	315	7 %	153	0 %
158471019555284	Jayaram S Shivalingaiah	455	45 %	370	22 %	385	21 %	367	28 %
158471019184158	Jayashree B	560	79 %	285	7 %	505	65 %	367	28 %
158471019355097	Jayashree Y	335	11 %	340	16 %	265	2 %	153	0 %
158471019646967	Jayashree K S	465	48 %	430	40 %	425	35 %	313	13 %
158471019560946	Jeevan S	500	61 %	-	-	335	10 %	207	2 %
158471019205739	Jeevan Ramesh	560	79 %	400	31 %	340	11 %	367	28 %
158471019148136	Jerry Joe	560	79 %	460	50 %	420	33 %	207	2 %
158471019430789	Jhanavi R	440	39 %	430	40 %	520	71 %	207	2 %
158471019738633	Jnanashree C	325	9 %	490	60 %	370	17 %	367	28 %
158471019276838	Jyeshtha Suyog	545	75 %	430	40 %	410	29 %	367	28 %
158471019546338	Jyothi G	335	19 %	310	17 %	360	24 %	367	28 %
158471019405472	Jyoti Togaralli Togaralli	385	22 %	310	10 %	250	2 %	367	28 %
158471019856868	K B	420	32 %	300	9 %	455	46 %	313	13 %
158471019399027	K S Manjunath Manjunath	335	11 %	240	3 %	290	4 %	260	5 %
158471019512982	Kallesha Hc	420	32 %	400	31 %	435	38 %	260	5 %
158471019476301	Kallesha S R	465	48 %	535	73 %	460	48 %	260	5 %
158471019152527	Kalmesh Patil	315	8 %	340	16 %	335	10 %	367	28 %
158471019403850	Kalpna T M	335	11 %	340	16 %	385	21 %	313	13 %
158471019223029	Kalpna D R	535	72 %	270	6 %	370	17 %	313	13 %
158471019442000	Kalyan Kumar	385	22 %	560	80 %	445	42 %	153	0 %
158471019109777	Karthik C	395	43 %	415	52 %	290	9 %	207	2 %
158471019679176	Karthik Ts	325	16 %	520	85 %	325	15 %	367	28 %
158471019252857	Karthik S	350	14 %	445	45 %	335	10 %	473	68 %
158471019532226	Karthik Holla V	665	96 %	415	35 %	425	35 %	260	5 %
158471019391189	Kavitha N Kavitha N	220	1 %	255	4 %	350	13 %	313	13 %
158471019160532	Kavitha.r Ramesh	475	52 %	560	80 %	370	17 %	207	2 %
158471019004534	Kavya H C H C	325	9 %	210	2 %	425	35 %	260	5 %
158471019850482	Keerthan Hs	545	75 %	550	77 %	505	65 %	367	28 %
158471019166163	Keerthan Km	595	87 %	490	60 %	205	1 %	420	48 %
158471019415934	Keerthana K S	420	32 %	400	31 %	400	26 %	420	48 %
158471019963921	Keerthana R	525	69 %	550	77 %	570	85 %	153	0 %

AMCAT ID	Name	AMCAT Score, Percentile							
		English Comprehension		Quantitative Ability		Logical Ability		C Programming	
158471019716674	Keerthana K	525	69 %	505	64 %	420	33 %	260	5 %
158471019181496	Keerti Hiremath	525	69 %	370	22 %	470	52 %	313	13 %
158471019627335	Keshav Kiran	615	91 %	505	64 %	350	13 %	420	48 %
158471019484104	Kiran H C	335	19 %	310	17 %	310	12 %	367	28 %
158471019980399	Kiran K	490	57 %	255	4 %	360	15 %	313	13 %
158471019549274	Kiran K C	395	43 %	120	0 %	410	41 %	153	0 %
158471019958444	Kiran Gowda N	545	75 %	340	16 %	425	35 %	313	13 %
158471019385421	Kiran Giri	430	36 %	355	19 %	240	1 %	260	5 %
158471019408013	Kiran Tn	370	18 %	285	7 %	375	19 %	367	28 %
158471019978099	Kiran H	420	32 %	535	73 %	395	24 %	313	13 %
158471019496389	Kiran K R Kiran	405	28 %	-	-	425	35 %	313	13 %
158471019578596	Kirankumar B M	490	57 %	415	35 %	410	29 %	207	2 %
158471019849232	Kirthis K	535	72 %	490	60 %	505	65 %	313	13 %
158471019908444	Kishan A	500	61 %	605	88 %	470	52 %	313	13 %
158471019338302	Kishore N	455	45 %	310	10 %	385	21 %	313	13 %
158471019652742	Kishore Elango	650	95 %	605	88 %	555	81 %	313	13 %
158471019730826	Kishore R	615	91 %	520	69 %	505	65 %	260	5 %
158471019675889	Kishore Mr	465	48 %	430	40 %	435	38 %	313	13 %
158471019156111	Kishore Us	420	32 %	310	10 %	375	19 %	367	28 %
158471019081838	Kishore Kumar	525	69 %	460	50 %	395	24 %	207	2 %
158471019353954	Korgi Shetty	525	69 %	370	22 %	505	65 %	367	28 %
158471019741889	Koushik M	360	16 %	520	69 %	360	15 %	313	13 %
158471019957746	Koushik Jayakumar	465	48 %	460	50 %	565	84 %	260	5 %
158471019505038	Kowsalya S N Sn	195	1 %	120	0 %	230	1 %	153	0 %
158471019490877	Krishna P	490	57 %	460	50 %	545	79 %	260	5 %
158471019520473	Kruthi Katte	595	87 %	535	73 %	425	35 %	420	48 %
158471019342263	Kruthika Jawahar	605	89 %	590	86 %	480	56 %	420	48 %
158471019478351	Kumara B S	535	72 %	415	35 %	340	11 %	367	28 %
158471019016042	Kunal Jayswal	455	45 %	560	80 %	385	21 %	313	13 %
158471019106464	Kushal M	500	61 %	445	45 %	480	56 %	207	2 %
158471019254699	L Vishwesh S Arya	640	94 %	650	94 %	540	77 %	473	68 %
158471019350092	Lakshimbai Hotti	455	45 %	370	22 %	300	5 %	100	0 %
158471019009477	Lakshman Tamang	465	48 %	490	60 %	335	10 %	420	48 %
158471019114380	Lakshmi Lakshmi	360	28 %	415	52 %	255	5 %	313	13 %
158471019083606	Lakshmisha Bl	370	18 %	255	4 %	-	-	260	5 %
158471019769886	Lal Puii	545	75 %	255	4 %	460	48 %	207	2 %
158471019603575	Lal Puii	455	45 %	370	22 %	410	29 %	207	2 %
158471019611754	Laldinpuii Colney	570	82 %	475	55 %	510	67 %	580	94 %
158471019488150	Lalhmachhuana Kiangte	455	45 %	430	40 %	435	38 %	367	28 %
158471019321424	Lavanya V	370	32 %	255	7 %	350	22 %	207	2 %
158471019933999	Lavanya S	360	16 %	385	26 %	410	29 %	473	68 %
158471019221785	Lavanya R T	370	18 %	490	60 %	375	19 %	313	13 %
158471019358329	Lavanya A B	500	86 %	300	15 %	315	13 %	367	28 %
158471019091209	Lavanya.n.s N.s	455	45 %	310	10 %	445	42 %	313	13 %
158471019477491	Laxman Parit	280	4 %	370	22 %	370	17 %	260	5 %

AMCAT ID	Name	AMCAT Score, Percentile							
		English Comprehension		Quantitative Ability		Logical Ability		C Programming	
158471019163019	Laxmi Tipgond	280	4 %	120	0 %	425	35 %	367	28 %
158471019254747	Likhith K	700	98 %	490	60 %	350	13 %	207	2 %
158471019926250	Likhitha H M	420	32 %	490	60 %	385	21 %	313	13 %
158471019177774	Likitha V	300	6 %	415	35 %	370	17 %	207	2 %
158471019318801	Likitha M	350	14 %	430	40 %	360	15 %	420	48 %
158471019483897	Lokeshkumar V	350	14 %	575	83 %	385	21 %	313	13 %
158471019330638	M R Sri Vani Sri Vani	430	36 %	415	35 %	470	52 %	367	28 %
158471019093325	M S Afraz Shariff	455	45 %	400	31 %	545	79 %	367	28 %
158471019068525	M Varshini Urs	455	45 %	240	3 %	435	38 %	367	28 %
158471019126206	Madhu Shree	640	100 %	270	9 %	395	36 %	260	5 %
158471019676915	Madhulika C	385	38 %	165	1 %	370	27 %	313	13 %
158471019935869	Madhura A S	525	69 %	490	60 %	385	21 %	313	13 %
158471019029116	Mahammed Ansar Y	385	22 %	445	45 %	385	21 %	367	28 %
158471019406101	Mahantesh Nimbargi	405	28 %	150	0 %	445	42 %	260	5 %
158471019656952	Mahantesh Gotur	290	8 %	445	63 %	265	6 %	207	2 %
158471019752277	Mahesh Doddi	335	11 %	285	7 %	460	48 %	207	2 %
158471019738991	Mahesh Mathapati	325	9 %	385	26 %	420	33 %	367	28 %
158471019296323	Mahesh Methre	395	25 %	240	3 %	285	4 %	260	5 %
158471019186122	Mahesh H	300	10 %	325	21 %	265	6 %	313	13 %
158471019690214	Maheshwara G	500	61 %	505	64 %	445	42 %	313	13 %
158471019785256	Mahiboob K	405	28 %	285	7 %	350	13 %	367	28 %
158471019040415	Mahima Shaini	405	28 %	475	55 %	460	48 %	367	28 %
158471019929547	Mallikarjun B Sasanur Sasanur	280	4 %	165	1 %	285	4 %	153	0 %
158471019752835	Mallikarjun Dhaduti Dhaduti	370	18 %	370	22 %	395	24 %	207	2 %
158471019570789	Mallikarjun Yadawad Yadawad	300	6 %	210	2 %	335	10 %	313	13 %
158471019680216	Mallikarjunaswamy B T	195	1 %	255	4 %	300	5 %	367	28 %
158471019590786	Mamatha N	370	18 %	445	45 %	350	13 %	153	0 %
158471019421752	Manasa M J	335	11 %	505	64 %	400	26 %	367	28 %
158471019806539	Manasa L	465	48 %	475	55 %	410	29 %	260	5 %
158471019826801	Manav Chethan Bijjahalli	580	84 %	285	7 %	395	24 %	313	13 %
158471019948418	Manikanta E	395	25 %	325	13 %	420	33 %	367	28 %
158471019901889	Manish Kumar	595	87 %	445	45 %	530	74 %	367	28 %
158471019288217	Manish R	560	79 %	415	35 %	420	33 %	260	5 %
158471019011413	Manish B	475	52 %	505	64 %	445	42 %	313	13 %
158471019375667	Manisha Sinha	525	69 %	550	77 %	485	58 %	473	68 %
158471019354622	Manjunath N K	500	61 %	520	69 %	435	38 %	367	28 %
158471019916101	Manjunath M	525	69 %	340	16 %	395	24 %	260	5 %
158471019576325	Manjunatha Cs Cs	420	32 %	460	50 %	425	35 %	260	5 %
158471019891023	Manjuntah N	300	10 %	445	63 %	335	18 %	313	13 %
158471019931415	Manjushree R Manjushree R	405	28 %	180	1 %	200	0 %	260	5 %
158471019075949	Manohar Pv	405	28 %	370	22 %	395	24 %	260	5 %

AMCAT ID	Name	AMCAT Score, Percentile							
		English Comprehension		Quantitative Ability		Logical Ability		C Programming	
158471019978627	Manoj Ms	640	100 %	490	78 %	460	59 %	367	28 %
158471019226111	Manoj Kumar	405	28 %	105	0 %	360	15 %	367	28 %
158471019350803	Manoj Thapa	455	45 %	445	45 %	350	13 %	260	5 %
158471019726547	Manoj Raju	475	52 %	415	35 %	505	65 %	313	13 %
158471019470043	Manoj T	265	3 %	340	16 %	340	11 %	367	28 %
158471019701323	Manoj Lt	455	45 %	490	60 %	425	35 %	313	13 %
158471019472422	Manoj Kumar S H	405	28 %	270	6 %	285	4 %	207	2 %
158471019458688	Manojkumar R	325	9 %	400	31 %	335	10 %	313	13 %
158471019308276	Manojkumar M	370	18 %	300	9 %	255	2 %	420	48 %
158471019979770	Manoritha A	420	32 %	370	22 %	460	48 %	473	68 %
158471019754140	Mansih Shetty	440	39 %	535	73 %	340	11 %	153	0 %
158471019167040	Mansoor Pasha	570	82 %	665	96 %	570	85 %	473	68 %
158471019080613	Manu K	335	11 %	300	9 %	335	10 %	207	2 %
158471019583070	Marasanna Marasanna	395	25 %	535	73 %	395	24 %	207	2 %
158471019422276	Meena G	420	32 %	340	16 %	460	48 %	313	13 %
158471019107109	Meet Shah	560	79 %	460	50 %	460	48 %	207	2 %
158471019212835	Megha Muniraju	500	61 %	210	2 %	455	46 %	313	13 %
158471019595925	Megha Pujari	510	64 %	475	55 %	395	24 %	260	5 %
158471019939358	Meghana T	405	28 %	355	19 %	400	26 %	367	28 %
158471019056940	Meghana Chitragar	465	48 %	445	45 %	370	17 %	260	5 %
158471019240928	Meghana C	490	57 %	355	19 %	290	4 %	313	13 %
158471019401580	Meghana L	440	39 %	165	1 %	360	15 %	367	28 %
158471019499286	Meghana. R	490	57 %	400	31 %	310	6 %	207	2 %
158471019859848	Meghashree M.b	560	79 %	460	50 %	435	38 %	420	48 %
158471019738723	Meghna Madhu	510	64 %	240	3 %	400	26 %	260	5 %
158471019803148	Mohamed Wasim	510	64 %	590	86 %	470	52 %	367	28 %
158471019481880	Mohammed A	545	75 %	535	73 %	495	62 %	473	68 %
158471019211603	Mohammed Farhan	685	97 %	385	26 %	555	81 %	473	68 %
158471019155422	Mohammed Sohail Shaiwale	630	93 %	430	40 %	480	56 %	153	0 %
158471019661948	Mohit Kumar R	710	99 %	430	40 %	470	52 %	313	13 %
158471019473125	Mohith Prajwal M	360	16 %	240	3 %	400	26 %	313	13 %
158471019941845	Monish K	545	75 %	490	60 %	420	33 %	260	5 %
158471019482201	Monisha K	560	79 %	505	64 %	395	24 %	420	48 %
158471019072780	Monisha Mani	335	11 %	520	69 %	395	24 %	313	13 %
158471019149795	Mownavi C V V	325	9 %	355	19 %	360	15 %	207	2 %
158471019268045	Mudalagiri Bhageeratha	350	14 %	605	88 %	470	52 %	367	28 %
158471019475309	Muktha Surya Hs	440	39 %	520	69 %	480	56 %	367	28 %
158471019423178	Mukul R	545	75 %	385	26 %	400	26 %	153	0 %
158471019599223	Muniraju. N	335	11 %	415	35 %	460	48 %	207	2 %
158471019201633	Muralidhara Shettigar	350	14 %	445	45 %	230	1 %	207	2 %
158471019510086	Murthy M N	615	91 %	415	35 %	410	29 %	367	28 %
158471019149218	Muthuraj V N	385	22 %	445	45 %	310	6 %	367	28 %
158471019500740	Mythri R	350	14 %	310	10 %	325	8 %	313	13 %
158471019110613	N M Prashantha	500	61 %	520	69 %	400	26 %	100	0 %

AMCAT ID	Name	AMCAT Score, Percentile							
		English Comprehension		Quantitative Ability		Logical Ability		C Programming	
158471019852559	N.priyanka Gowda	430	36 %	560	80 %	545	79 %	367	28 %
158471019446224	Nabin Pun	595	87 %	-	-	495	62 %	153	0 %
158471019019248	Nachiketa Naik	675	97 %	445	45 %	435	38 %	420	48 %
158471019553093	Nagabhooshan Mesta	455	70 %	300	15 %	425	46 %	420	48 %
158471019506187	Nagappa Talwar	195	1 %	355	19 %	350	13 %	420	48 %
158471019342713	Nagaraj Mugali	325	16 %	385	41 %	400	37 %	153	0 %
158471019764375	Nagaraj G S	265	3 %	310	10 %	425	35 %	100	0 %
158471019799087	Nagaveni N	490	57 %	370	22 %	395	24 %	367	28 %
158471019501021	Nagendra K N	405	28 %	370	22 %	410	29 %	100	0 %
158471019491627	Nagesh Wadde	510	64 %	520	69 %	435	38 %	313	13 %
158471019352163	Najeembegum Najeema	335	11 %	325	13 %	315	7 %	153	0 %
158471019675477	Nalin Ts Naidu	405	28 %	490	60 %	460	48 %	420	48 %
158471019647787	Namitha Rao	665	96 %	520	69 %	470	52 %	153	0 %
158471019747937	Namitha G	510	64 %	340	16 %	435	38 %	473	68 %
158471019865079	Namratha Hegde	430	36 %	575	83 %	435	38 %	207	2 %
158471019823861	Namratha Hombale	580	84 %	505	64 %	530	74 %	367	28 %
158471019189358	Nandini N	465	48 %	385	26 %	400	26 %	313	13 %
158471019558258	Narendrababu T N	405	28 %	400	31 %	385	21 %	527	84 %
158471019730656	Naveen R	440	64 %	165	1 %	400	37 %	580	94 %
158471019797185	Naveen N	280	6 %	150	1 %	435	50 %	260	5 %
158471019277797	Naveen N J	455	45 %	355	19 %	445	42 %	313	13 %
158471019544904	Naveen H M	510	64 %	415	35 %	375	19 %	153	0 %
158471019414321	Naveen Mr	420	32 %	430	40 %	375	19 %	313	13 %
158471019050288	Naveen Aj	335	11 %	100	0 %	230	1 %	367	28 %
158471019600826	Naveen P R	465	48 %	575	83 %	410	29 %	367	28 %
158471019446407	Naveen A	545	75 %	415	35 %	400	26 %	367	28 %
158471019903203	Naveen K H Kh	360	16 %	605	88 %	350	13 %	207	2 %
158471019672614	Naveen Kumar G N	335	11 %	430	40 %	385	21 %	367	28 %
158471019212696	Navya Pv	315	13 %	285	11 %	265	6 %	367	28 %
158471019218017	Nayana H	385	22 %	505	64 %	425	35 %	260	5 %
158471019164609	Nayana Naik	315	8 %	430	40 %	310	6 %	207	2 %
158471019207994	Nayana N Nayana N	370	18 %	300	9 %	425	35 %	207	2 %
158471019674756	Neeshu Yadav	510	64 %	355	19 %	530	74 %	313	13 %
158471019188988	Neha S	490	57 %	430	40 %	435	38 %	313	13 %
158471019768359	Nesar Harsha	510	64 %	370	22 %	360	15 %	313	13 %
158471019579175	Netaji Naik	300	6 %	385	26 %	420	33 %	527	84 %
158471019329451	Nethravathi M M	290	5 %	325	13 %	340	11 %	153	0 %
158471019934021	Niharika M S	605	89 %	520	69 %	505	65 %	473	68 %
158471019637773	Niiveditha Sd	630	93 %	430	40 %	445	42 %	420	48 %
158471019104397	Niketh M	615	91 %	445	45 %	460	48 %	207	2 %
158471019617179	Nikhil T R	570	82 %	385	26 %	425	35 %	207	2 %
158471019751493	Nikhil Nikhilreddy G	325	9 %	340	16 %	400	26 %	313	13 %
158471019226412	Nikhil H	650	95 %	400	31 %	395	24 %	207	2 %
158471019974822	Nikhita Kalburgikar	490	57 %	400	31 %	445	42 %	473	68 %
158471019109603	Nikhitha A R	360	16 %	355	19 %	425	35 %	260	5 %

AMCAT ID	Name	AMCAT Score, Percentile							
		English Comprehension		Quantitative Ability		Logical Ability		C Programming	
158471019308607	Nikhitha A	510	64 %	370	22 %	435	38 %	367	28 %
158471019084975	Nikita Shet	475	52 %	355	19 %	350	13 %	473	68 %
158471019031437	Niranjana M	280	6 %	285	11 %	325	15 %	313	13 %
158471019173724	Nirja Shah	580	84 %	620	91 %	480	56 %	313	13 %
158471019600020	Nirosha R	455	45 %	340	16 %	340	11 %	420	48 %
158471019631959	Nirupama P N	510	64 %	430	40 %	495	62 %	420	48 %
158471019657357	Nisarga A.m.	465	48 %	225	2 %	400	26 %	367	28 %
158471019980682	Nisarga V	405	28 %	445	45 %	375	19 %	367	28 %
158471019103200	Nischitha V Nischitha V	455	45 %	385	26 %	455	46 %	260	5 %
158471019665726	Nishan Paudel	570	82 %	605	88 %	435	38 %	473	68 %
158471019381773	Nishanth B	665	96 %	355	19 %	570	85 %	367	28 %
158471019454428	Nishchith M	370	18 %	475	55 %	395	24 %	367	28 %
158471019532838	Nishchitha A	335	11 %	180	1 %	360	15 %	153	0 %
158471019551669	Nithin B	770	100 %	505	64 %	455	46 %	580	94 %
158471019103199	Nithin M P	370	18 %	355	19 %	375	19 %	207	2 %
158471019812205	Nithish J	605	89 %	415	35 %	445	42 %	207	2 %
158471019953535	Nithya Shree Vs	335	11 %	370	22 %	400	26 %	260	5 %
158471019458600	Nitin Ranjan	545	75 %	550	77 %	510	67 %	313	13 %
158471019071342	Nitish Gr	350	14 %	300	9 %	400	26 %	260	5 %
158471019700235	Niveditha G V	440	39 %	550	77 %	435	38 %	207	2 %
158471019411176	Niveditha V V	440	39 %	355	19 %	360	15 %	313	13 %
158471019101969	Nonitha C	630	93 %	415	35 %	420	33 %	207	2 %
158471019940109	Noor Fathima.s	405	28 %	340	16 %	460	48 %	260	5 %
158471019705679	Noushad Khan Kham	370	18 %	340	16 %	435	38 %	260	5 %
158471019907423	Omkar Chalageri	335	11 %	370	22 %	485	58 %	207	2 %
158471019341255	Omkar Chavan	510	64 %	505	64 %	360	15 %	473	68 %
158471019634304	Owais Para	430	36 %	505	64 %	425	35 %	207	2 %
158471019621569	Paavani Komarla	385	22 %	520	69 %	445	42 %	313	13 %
158471019330776	Padmanabham G	395	43 %	195	2 %	250	4 %	420	48 %
158471019350524	Panchavathi Panchavathi	245	2 %	120	0 %	315	7 %	313	13 %
158471019292935	Pandurang Reddy	315	8 %	270	6 %	315	7 %	420	48 %
158471019851808	Pankaj Pandey	430	36 %	355	19 %	485	58 %	207	2 %
158471019610357	Parikshith R	300	6 %	370	22 %	375	19 %	313	13 %
158471019990352	Parnika Devi.s	395	25 %	240	3 %	410	29 %	153	0 %
158471019686354	Pavan K	440	39 %	310	10 %	385	21 %	260	5 %
158471019091223	Pavan K V	350	14 %	460	50 %	400	26 %	313	13 %
158471019651779	Pavan Tm	395	43 %	310	17 %	265	6 %	260	5 %
158471019739897	Pavan V	325	9 %	210	2 %	275	3 %	153	0 %
158471019161868	Pavankumar V S Pavan	315	8 %	105	0 %	290	4 %	260	5 %
158471019178575	Pavithra S	595	87 %	560	80 %	570	85 %	260	5 %
158471019993023	Pavithra Bt	490	57 %	225	2 %	385	21 %	207	2 %
158471019522010	Pavithra .h.k H.k	455	45 %	385	26 %	335	10 %	260	5 %
158471019193411	Pawan Deyannavar	315	8 %	475	55 %	375	19 %	207	2 %
158471019649707	Pooja Vasanth	315	13 %	285	11 %	370	27 %	207	2 %

AMCAT ID	Name	AMCAT Score, Percentile							
		English Comprehension		Quantitative Ability		Logical Ability		C Programming	
158471019722040	Pooja J S	455	45 %	-	-	480	56 %	313	13 %
158471019842163	Pooja Billava	385	22 %	385	26 %	410	29 %	313	13 %
158471019674394	Pooja Bedre	420	32 %	225	2 %	410	29 %	527	84 %
158471019057857	Pooja V	395	43 %	370	35 %	340	19 %	367	28 %
158471019930733	Pooja J	560	79 %	650	94 %	485	58 %	260	5 %
158471019614166	Pooja Srinivas	465	48 %	620	91 %	455	46 %	313	13 %
158471019320346	Pooja Iti	465	48 %	520	69 %	360	15 %	313	13 %
158471019077860	Pooja H S	475	52 %	445	45 %	460	48 %	420	48 %
158471019385982	Pooja Nalige	560	79 %	340	16 %	310	6 %	260	5 %
158471019533145	Pooja C T Pooja C T	360	16 %	195	1 %	285	4 %	313	13 %
158471019375940	Pooja L Pooja L	370	18 %	225	2 %	370	17 %	260	5 %
158471019171926	Pooja S Pooja S	350	24 %	415	52 %	335	18 %	313	13 %
158471019064201	Pooja Yadav P N	465	48 %	355	19 %	285	4 %	260	5 %
158471019922148	Poojashree S	360	16 %	120	0 %	300	5 %	367	28 %
158471019143721	Poojesh Gowda R	395	25 %	355	19 %	255	2 %	260	5 %
158471019945243	Poojit Chowdry	735	99 %	520	69 %	485	58 %	313	13 %
158471019691289	Poornima A	510	64 %	550	77 %	460	48 %	527	84 %
158471019801778	Poornima G	405	28 %	535	73 %	435	38 %	313	13 %
158471019564199	Poornima Poornima	370	18 %	195	1 %	250	2 %	473	68 %
158471019853170	Praagna Md	385	22 %	355	19 %	425	35 %	473	68 %
158471019719417	Prabhu Sahu	440	39 %	225	2 %	315	7 %	207	2 %
158471019449223	Prabudh Pa	420	32 %	385	26 %	190	0 %	153	0 %
158471019202000	Pradeep Walikar	300	6 %	165	1 %	310	6 %	367	28 %
158471019442590	Pradeep Kumar Amaranarayanawamy	465	48 %	240	3 %	290	4 %	313	13 %
158471019455846	Pragathi M	370	18 %	255	4 %	460	48 %	260	5 %
158471019711698	Pragathi N	360	16 %	385	26 %	420	33 %	313	13 %
158471019737526	Pragik Timsina	595	87 %	400	31 %	350	13 %	153	0 %
158471019288082	Pragnya Tiger	465	48 %	225	2 %	360	15 %	420	48 %
158471019779549	Prajwal Venkatesh	665	96 %	680	97 %	590	89 %	473	68 %
158471019333353	Prajwal P	475	52 %	520	69 %	435	38 %	473	68 %
158471019313707	Prajwal M	475	52 %	400	31 %	425	35 %	260	5 %
158471019545597	Prajwal N	405	28 %	370	22 %	370	17 %	313	13 %
158471019605218	Prajwal T R	615	91 %	400	31 %	505	65 %	473	68 %
158471019593974	Prajwal M	630	93 %	505	64 %	400	26 %	420	48 %
158471019850664	Prajwal Mn	430	36 %	460	50 %	485	58 %	260	5 %
158471019136361	Prajwal D	475	52 %	460	50 %	335	10 %	153	0 %
158471019900251	Prajwal Gaikwad	475	52 %	550	77 %	290	4 %	367	28 %
158471019141721	Prajwal Telkar	220	1 %	120	0 %	275	3 %	420	48 %
158471019298645	Prajwal M	395	25 %	270	6 %	240	1 %	207	2 %
158471019901281	Prajwal K Pralwal K	405	28 %	225	2 %	360	15 %	260	5 %
158471019595529	Prakash Kandagule	395	25 %	430	40 %	360	15 %	207	2 %
158471019677361	Prakash Chauhan	455	45 %	325	13 %	445	42 %	313	13 %
158471019582747	Prarthana B M	490	57 %	475	55 %	425	35 %	420	48 %
158471019891262	Prasad Naik	500	61 %	415	35 %	375	19 %	260	5 %
158471019788564	Prasad Bilagi	475	52 %	415	35 %	510	67 %	313	13 %

AMCAT ID	Name	AMCAT Score, Percentile							
		English Comprehension		Quantitative Ability		Logical Ability		C Programming	
158471019176346	Prasanna P	580	84 %	590	86 %	395	24 %	207	2 %
158471019171495	Prasanna Hp Hp	370	18 %	240	3 %	495	62 %	367	28 %
158471019971942	Prashant Kumar	395	25 %	355	19 %	310	6 %	367	28 %
158471019935757	Prashant Paudel	525	69 %	-	-	510	67 %	207	2 %
158471019224540	Prashant Kolli	335	11 %	165	1 %	250	2 %	313	13 %
158471019209866	Prashant P	325	9 %	340	16 %	375	19 %	260	5 %
158471019472509	Prashanth Kulkunda	430	36 %	300	9 %	485	58 %	313	13 %
158471019550648	Prashanth Raj	350	14 %	400	31 %	420	33 %	313	13 %
158471019183646	Prasheeta Shetty	605	89 %	415	35 %	480	56 %	260	5 %
158471019011554	Prateek Ranjan	570	82 %	430	40 %	425	35 %	207	2 %
158471019245658	Prathapa Swamy.r	315	13 %	225	4 %	230	3 %	367	28 %
158471019033273	Pratheepkumar N M	370	18 %	285	7 %	360	15 %	153	0 %
158471019081014	Prathibha H.m Prathibha H.m	350	14 %	135	0 %	325	8 %	313	13 %
158471019971751	Prathyusha K	545	75 %	415	35 %	445	42 %	260	5 %
158471019235654	Pratik Sharma	420	32 %	310	10 %	400	26 %	207	2 %
158471019906721	Pratik Ojha	430	36 %	535	73 %	485	58 %	313	13 %
158471019760033	Pratiksha Rao	525	69 %	-	-	435	38 %	313	13 %
158471019025394	Praveen Vs	560	79 %	150	0 %	350	13 %	313	13 %
158471019083246	Praveen Kumar K N	465	48 %	-	-	-	-	367	28 %
158471019615768	Praveen B C	430	36 %	385	26 %	385	21 %	367	28 %
158471019783417	Praveenkumar P V	315	8 %	255	4 %	360	15 %	367	28 %
158471019511670	Preetha P	430	36 %	300	9 %	495	62 %	473	68 %
158471019148508	Preetham M N	370	18 %	505	64 %	435	38 %	527	84 %
158471019401202	Preetham S	490	57 %	490	60 %	445	42 %	153	0 %
158471019786352	Preethi S	665	96 %	550	77 %	505	65 %	313	13 %
158471019885678	Preksha Das	430	36 %	240	3 %	385	21 %	367	28 %
158471019734374	Prem Vel	405	28 %	240	3 %	410	29 %	367	28 %
158471019888204	Prithvi B	560	79 %	620	91 %	460	48 %	260	5 %
158471019327839	Prithviraj Bangarimath	500	61 %	355	19 %	425	35 %	260	5 %
158471019869114	Priyanka C	580	84 %	430	40 %	455	46 %	367	28 %
158471019242503	Priyanka Hamu Rathod Rathod	490	57 %	300	9 %	-	-	367	28 %
158471019886669	Pruthvi B R B R	420	32 %	445	45 %	315	7 %	420	48 %
158471019076277	Puja Anand	420	32 %	505	64 %	455	46 %	207	2 %
158471019372427	Pulasya .n	350	24 %	120	0 %	325	15 %	313	13 %
158471019223303	Puneeth Ns	570	82 %	325	13 %	400	26 %	153	0 %
158471019109199	Puneeth H A	385	22 %	490	60 %	275	3 %	313	13 %
158471019560082	Purushotham Gowda B K	475	52 %	355	19 %	455	46 %	260	5 %
158471019686689	Pushpalatha B	325	9 %	475	55 %	425	35 %	260	5 %
158471019512809	R Lalnunhlua	560	79 %	560	80 %	555	81 %	260	5 %
158471019530261	R Harshavardhana	595	87 %	575	83 %	315	7 %	313	13 %
158471019386943	R Yogesh	510	64 %	400	31 %	485	58 %	367	28 %
158471019182599	R Nandana	440	64 %	225	4 %	395	36 %	367	28 %
158471019478842	Rachana R	335	11 %	255	4 %	395	24 %	260	5 %
158471019116032	Rachana M	640	94 %	605	88 %	395	24 %	313	13 %

AMCAT ID	Name	AMCAT Score, Percentile							
		English Comprehension		Quantitative Ability		Logical Ability		C Programming	
158471019140195	Rachana SI	500	61 %	475	55 %	315	7 %	207	2 %
158471019644258	Rachana P Rachana	335	11 %	475	55 %	360	15 %	260	5 %
158471019245285	Rachitha G K	525	69 %	490	60 %	480	56 %	420	48 %
158471019276609	Rachitha C	535	72 %	575	83 %	435	38 %	313	13 %
158471019103264	Radhika S	300	6 %	255	4 %	395	24 %	260	5 %
158471019864676	Raghav Sapkota	525	69 %	400	31 %	385	21 %	367	28 %
158471019090744	Raghav R	370	18 %	355	19 %	510	67 %	207	2 %
158471019067138	Raghava R P	595	87 %	725	99 %	565	84 %	207	2 %
158471019796009	Raghavendra Madargaon	535	72 %	445	45 %	460	48 %	260	5 %
158471019167408	Raghavendra Bhat	455	45 %	475	55 %	445	42 %	313	13 %
158471019164738	Raghavendra B	570	82 %	490	60 %	425	35 %	367	28 %
158471019351195	Raghavendra Prabhu M N	290	5 %	195	1 %	300	5 %	367	28 %
158471019767766	Raghavendra.u Umesh	490	57 %	270	6 %	310	6 %	313	13 %
158471019985686	Raghuvamshi A	510	64 %	505	64 %	425	35 %	260	5 %
158471019043933	Rahul R	675	97 %	680	97 %	545	79 %	527	84 %
158471019259171	Rahul Shanbhog	420	32 %	385	26 %	420	33 %	313	13 %
158471019289573	Rahul G	405	28 %	300	9 %	265	2 %	207	2 %
158471019235754	Raj Thakur	420	32 %	325	13 %	290	4 %	260	5 %
158471019836575	Rajesh R E	395	25 %	400	31 %	350	13 %	367	28 %
158471019889850	Rajesh Hk	405	28 %	340	16 %	360	15 %	260	5 %
158471019225895	Rajesh S	360	16 %	285	7 %	285	4 %	260	5 %
158471019340993	Rakesh B P Raki	315	8 %	325	13 %	300	5 %	367	28 %
158471019443219	Rakesha K U	300	6 %	520	69 %	385	21 %	367	28 %
158471019794983	Rakesha Metre	255	3 %	300	9 %	335	10 %	207	2 %
158471019295827	Raksha Hande	630	93 %	445	45 %	480	56 %	367	28 %
158471019202042	Raksha Honnali	615	91 %	605	88 %	470	52 %	313	13 %
158471019539026	Rakshith J	510	64 %	490	60 %	505	65 %	207	2 %
158471019218767	Rakshith K	405	28 %	550	77 %	455	46 %	260	5 %
158471019321946	Rakshith K	395	25 %	180	1 %	300	5 %	207	2 %
158471019091351	Rakshith Shankar	350	14 %	310	10 %	410	29 %	313	13 %
158471019204602	Rakshitha L	595	87 %	285	7 %	370	17 %	420	48 %
158471019158530	Rakshitha M P	430	36 %	370	22 %	460	48 %	420	48 %
158471019629430	Rakshitha H	265	3 %	165	1 %	350	13 %	313	13 %
158471019094271	Rakshitha V	570	82 %	460	50 %	480	56 %	367	28 %
158471019827990	Rakshitha C	430	36 %	285	7 %	315	7 %	313	13 %
158471019806722	Rakshitha Bs	360	16 %	400	31 %	400	26 %	420	48 %
158471019952851	Ramchandra Shahi Thakuri	420	32 %	460	50 %	480	56 %	367	28 %
158471019610418	Ramesh M	405	28 %	310	10 %	265	2 %	313	13 %
158471019327814	Ramya Ramya N	315	8 %	340	16 %	360	15 %	420	48 %
158471019162498	Ramya S Subramani	455	70 %	240	5 %	350	22 %	313	13 %
158471019497060	Ramyashree C.r	405	28 %	310	10 %	335	10 %	260	5 %
158471019708135	Ranjan Raj	455	45 %	400	31 %	385	21 %	260	5 %
158471019707812	Ranjith Kumar D R	490	57 %	385	26 %	395	24 %	313	13 %
158471019906871	Ranjitha M	370	18 %	355	19 %	530	74 %	313	13 %

AMCAT ID	Name	AMCAT Score, Percentile							
		English Comprehension		Quantitative Ability		Logical Ability		C Programming	
158471019648226	Rashmi K N	370	18 %	445	45 %	400	26 %	100	0 %
158471019945542	Rashmi Baluragi	430	36 %	520	69 %	445	42 %	207	2 %
158471019811599	Rathan Lal Rathan Lal	405	28 %	240	3 %	360	15 %	100	0 %
158471019107722	Ravi V	280	4 %	300	9 %	315	7 %	260	5 %
158471019550589	Ravish H	525	69 %	520	69 %	400	26 %	207	2 %
158471019458644	Renukaprasad C C	370	18 %	415	35 %	445	42 %	100	0 %
158471019122477	Reshma M	420	32 %	165	1 %	360	15 %	420	48 %
158471019106604	Rijwan Ahmad	370	18 %	475	55 %	335	10 %	313	13 %
158471019287207	Rohan Nirnakar	475	52 %	-	-	400	26 %	313	13 %
158471019897885	Rohini S	440	39 %	300	9 %	400	26 %	260	5 %
158471019321975	Rohit A	405	28 %	490	60 %	420	33 %	207	2 %
158471019187792	Rohit Sharma	455	45 %	490	60 %	510	67 %	260	5 %
158471019379220	Rohith Tn	665	96 %	445	45 %	545	79 %	260	5 %
158471019758659	Rohith Sp	490	57 %	590	86 %	385	21 %	527	84 %
158471019494007	Ronith B	500	61 %	325	13 %	460	48 %	313	13 %
158471019552722	Roopesh Kumar	525	69 %	475	55 %	520	71 %	313	13 %
158471019538041	Roopesh Np	325	16 %	240	5 %	395	36 %	153	0 %
158471019219572	Ruchitha Reddy V R	455	45 %	620	91 %	480	56 %	260	5 %
158471019761099	Rudresh H	335	19 %	285	11 %	360	24 %	367	28 %
158471019213443	Rumanabi Sollapure	370	32 %	120	0 %	325	15 %	367	28 %
158471019055105	Rupeseh Shrestha	360	16 %	520	69 %	485	58 %	260	5 %
158471019749576	S Vaishnavi	420	32 %	400	31 %	385	21 %	367	28 %
158471019557941	S.r Naik	395	25 %	270	6 %	275	3 %	313	13 %
158471019282442	Sachidanand Kadam	350	14 %	460	50 %	325	8 %	260	5 %
158471019964484	Sachin S	455	45 %	400	31 %	445	42 %	260	5 %
158471019173197	Sachin Sarvad	370	18 %	445	45 %	400	26 %	207	2 %
158471019460346	Sachin B	595	87 %	285	7 %	435	38 %	207	2 %
158471019318620	Sachin Shinde	440	39 %	105	0 %	350	13 %	420	48 %
158471019223364	Sachin N	335	11 %	575	83 %	530	74 %	260	5 %
158471019366981	Sachin Mp	420	32 %	180	1 %	370	17 %	207	2 %
158471019292966	Sachin Ronad	370	18 %	270	6 %	290	4 %	313	13 %
158471019967192	Sagar N	385	22 %	100	0 %	255	2 %	260	5 %
158471019877123	Sagar Sagar	370	18 %	355	19 %	425	35 %	367	28 %
158471019678781	Sagar Hm	370	18 %	270	6 %	325	8 %	260	5 %
158471019521432	Sagar Katnalli	510	64 %	460	50 %	435	38 %	207	2 %
158471019799801	Sambit Sanyal	580	84 %	505	64 %	435	38 %	580	94 %
158471019963074	Samir Soudagar	315	8 %	195	1 %	290	4 %	260	5 %
158471019912828	Sandesh Kafle	580	84 %	550	77 %	455	46 %	367	28 %
158471019752437	Sandesh K U	395	25 %	195	1 %	385	21 %	367	28 %
158471019475251	Sandhya R	325	9 %	385	26 %	230	1 %	260	5 %
158471019748828	Sandhya Varshini	570	82 %	325	13 %	360	15 %	420	48 %
158471019684145	Sandhya M V M V	360	16 %	270	6 %	350	13 %	207	2 %
158471019635475	Sangamesh Patil	510	64 %	535	73 %	570	85 %	420	48 %
158471019993442	Sangeetha C	395	43 %	370	35 %	315	13 %	367	28 %
158471019764481	Sanjana.r R	580	84 %	430	40 %	385	21 %	260	5 %
158471019341213	Sanjay S	395	25 %	150	0 %	360	15 %	260	5 %

AMCAT ID	Name	AMCAT Score, Percentile							
		English Comprehension		Quantitative Ability		Logical Ability		C Programming	
158471019844808	Sanjay N J	560	79 %	490	60 %	485	58 %	367	28 %
158471019002832	Sanjay Gopikrishna	545	75 %	240	3 %	370	17 %	207	2 %
158471019135672	Sanjay S	560	79 %	270	6 %	395	24 %	260	5 %
158471019693901	Sansi M	315	8 %	385	26 %	435	38 %	313	13 %
158471019222369	Santosh B G	615	91 %	620	91 %	540	77 %	207	2 %
158471019975174	Santosh P M	525	69 %	520	69 %	435	38 %	260	5 %
158471019506067	Saraswathi M	280	6 %	225	4 %	290	9 %	100	0 %
158471019024059	Sarin Sharma	490	57 %	370	22 %	265	2 %	367	28 %
158471019512656	Sathak Khandelwal	720	99 %	575	83 %	580	87 %	527	84 %
158471019876300	Sathwik Vu	455	45 %	520	69 %	455	46 %	313	13 %
158471019318994	Sathyendra H R	630	93 %	475	55 %	545	79 %	260	5 %
158471019747992	Saurav Chaudhary	475	52 %	535	73 %	395	24 %	420	48 %
158471019536628	Savita Meti	350	14 %	340	16 %	350	13 %	473	68 %
158471019444381	Senthilanand P	650	95 %	355	19 %	485	58 %	207	2 %
158471019425861	Shaik Hussain	430	36 %	535	73 %	505	65 %	153	0 %
158471019150287	Shambhavi P K	465	48 %	400	31 %	335	10 %	100	0 %
158471019348322	Shamita J	525	69 %	460	50 %	505	65 %	153	0 %
158471019938913	Shanmukha Naik	350	14 %	210	2 %	240	1 %	260	5 %
158471019167427	Sharath B.s	300	6 %	325	13 %	395	24 %	367	28 %
158471019959791	Sharath Kumara H S Sharath Kumara H S	290	5 %	120	0 %	255	2 %	100	0 %
158471019364677	Shashank Bhujang	525	69 %	430	40 %	455	46 %	153	0 %
158471019900523	Shashank Baragur	440	39 %	695	97 %	470	52 %	260	5 %
158471019669202	Shashank B	475	52 %	340	16 %	530	74 %	153	0 %
158471019205758	Shashank Patel	335	11 %	325	13 %	410	29 %	313	13 %
158471019377235	Shashi .s	325	9 %	340	16 %	445	42 %	313	13 %
158471019862351	Shashikant Biradar	335	11 %	195	1 %	225	1 %	207	2 %
158471019525054	Shashikumar Metagar	430	36 %	370	22 %	360	15 %	313	13 %
158471019411951	Sheksha Vali	335	11 %	445	45 %	350	13 %	260	5 %
158471019359527	Shilpa G T	650	95 %	370	22 %	495	62 %	153	0 %
158471019504834	Shilpa M	510	64 %	445	45 %	420	33 %	473	68 %
158471019513988	Shilpa S	465	48 %	-	-	360	15 %	473	68 %
158471019051960	Shilpa K G Shilpa K G	325	9 %	225	2 %	360	15 %	260	5 %
158471019174123	Shilpashree N	455	45 %	270	6 %	240	1 %	260	5 %
158471019051261	Shivaji Dhone	615	91 %	560	80 %	545	79 %	420	48 %
158471019417620	Shivakumar S K	455	45 %	430	40 %	445	42 %	313	13 %
158471019411422	Shivanand Hugar	350	14 %	415	35 %	340	11 %	207	2 %
158471019183710	Shivaraj Mulugund	280	6 %	385	41 %	375	29 %	367	28 %
158471019807058	Shivaraj Patil	360	16 %	505	64 %	485	58 %	367	28 %
158471019203070	Shivashankar Y S	500	61 %	340	16 %	375	19 %	420	48 %
158471019994749	Shivasharana B	300	6 %	255	4 %	375	19 %	207	2 %
158471019829953	Shivraj Karenawar	290	5 %	810	100 %	615	93 %	313	13 %
158471019948464	Shravan Kumar	735	99 %	-	-	435	38 %	420	48 %
158471019482770	Shravani S	605	89 %	270	6 %	325	8 %	420	48 %
158471019445868	Shravya M S	545	75 %	680	97 %	565	84 %	260	5 %
158471019771245	Shreeja V	580	84 %	605	88 %	540	77 %	420	48 %

AMCAT ID	Name	AMCAT Score, Percentile							
		English Comprehension		Quantitative Ability		Logical Ability		C Programming	
158471019710580	Shreya Bg	595	87 %	505	64 %	510	67 %	313	13 %
158471019716366	Shreya S	570	82 %	560	80 %	505	65 %	420	48 %
158471019442317	Shreya Srinivas	685	97 %	475	55 %	460	48 %	313	13 %
158471019071560	Shreya K P	290	5 %	325	13 %	375	19 %	473	68 %
158471019360275	Shreyank P	405	28 %	255	4 %	335	10 %	367	28 %
158471019818127	Shreyas S	500	61 %	520	69 %	435	38 %	313	13 %
158471019912704	Shreyas Hk	580	84 %	505	64 %	435	38 %	260	5 %
158471019596693	Shreyas S	500	61 %	550	77 %	435	38 %	207	2 %
158471019695784	Shridutt M	580	84 %	590	86 %	495	62 %	260	5 %
158471019654621	Shrinivas Fadnis	455	45 %	370	22 %	370	17 %	153	0 %
158471019058358	Shrinivas A	455	45 %	475	55 %	310	6 %	313	13 %
158471019280040	Shriram Bhat	280	4 %	270	6 %	435	38 %	313	13 %
158471019046090	Shrusti S	500	61 %	550	77 %	485	58 %	473	68 %
158471019882233	Shrusti Chavan	500	61 %	340	16 %	350	13 %	313	13 %
158471019520836	Shruthi B P	440	39 %	370	22 %	510	67 %	313	13 %
158471019989639	Shruti Chittaragi	385	38 %	165	1 %	275	7 %	260	5 %
158471019361048	Shubha Ms Ms	350	14 %	240	3 %	285	4 %	313	13 %
158471019652553	Shubham Biradar	325	9 %	355	19 %	315	7 %	473	68 %
158471019732378	Shubham Kumar	630	93 %	550	77 %	595	90 %	313	13 %
158471019377184	Shwetha B S	490	57 %	575	83 %	485	58 %	207	2 %
158471019160840	Shwetha R	280	4 %	255	4 %	285	4 %	367	28 %
158471019123107	Shwetha G	510	64 %	310	10 %	400	26 %	260	5 %
158471019760609	Shyla G Shyla G	430	36 %	400	31 %	325	8 %	313	13 %
158471019249924	Shylaja C D Shylaja C D	440	39 %	370	22 %	340	11 %	260	5 %
158471019358361	Siddappa Kuri	245	2 %	505	64 %	300	5 %	313	13 %
158471019121952	Siddareddy Kt Reddy Kt	370	18 %	195	1 %	240	1 %	260	5 %
158471019893889	Siddu Gudagudi	640	94 %	460	50 %	520	71 %	367	28 %
158471019985980	Sinchana Gowda	325	9 %	325	13 %	420	33 %	420	48 %
158471019018207	Sindhu R	525	69 %	285	7 %	360	15 %	313	13 %
158471019355447	Sindhu K	545	75 %	210	2 %	435	38 %	420	48 %
158471019479389	Sindhu S Nagajjanavar Nagajjanavar	385	22 %	490	60 %	395	24 %	260	5 %
158471019187674	Sirisha M	430	36 %	475	55 %	435	38 %	420	48 %
158471019213431	Sirisha R	395	43 %	240	5 %	325	15 %	260	5 %
158471019520140	Smitha S B Smitha	580	84 %	285	7 %	340	11 %	473	68 %
158471019564225	Smriti Bhimsen	420	32 %	285	7 %	435	38 %	260	5 %
158471019822043	Somanna T	335	19 %	285	11 %	360	24 %	313	13 %
158471019998852	Somayya Kokani	430	36 %	355	19 %	510	67 %	153	0 %
158471019697348	Somesh Dhariwal	360	16 %	255	4 %	505	65 %	207	2 %
158471019044970	Sourabh R	580	84 %	-	-	435	38 %	367	28 %
158471019172878	Sourabh Somvanshi	570	82 %	355	19 %	410	29 %	153	0 %
158471019618009	Sowndarya B A	315	8 %	240	3 %	410	29 %	207	2 %
158471019981899	Spandan Nepal	500	61 %	650	94 %	410	29 %	313	13 %
158471019008060	Sparsha.a A	405	28 %	195	1 %	290	4 %	313	13 %
158471019894901	Sridhar Chapparbande	350	14 %	300	9 %	370	17 %	313	13 %

AMCAT ID	Name	AMCAT Score, Percentile							
		English Comprehension		Quantitative Ability		Logical Ability		C Programming	
158471019258653	Srikanth V	440	39 %	270	6 %	505	65 %	153	0 %
158471019466449	Srikanth Yadhav Bv	280	6 %	340	25 %	410	41 %	473	68 %
158471019846721	Srinath C	420	32 %	150	0 %	255	2 %	313	13 %
158471019057455	Srinidhi K S	605	89 %	560	80 %	555	81 %	207	2 %
158471019152237	Srinidhi S	510	64 %	300	9 %	400	26 %	207	2 %
158471019228771	Srinivas B S	430	36 %	400	31 %	340	11 %	260	5 %
158471019323638	Srinivas M.r	455	70 %	285	11 %	340	19 %	100	0 %
158471019489895	Stanzin Pusang	430	36 %	285	7 %	400	26 %	420	48 %
158471019670741	Stebin Biju	500	61 %	370	22 %	190	0 %	473	68 %
158471019467583	Subash Gautam	430	36 %	400	31 %	335	10 %	207	2 %
158471019403715	Subrahmanya K P	525	69 %	560	80 %	400	26 %	420	48 %
158471019895172	Subramani C Subbu	350	14 %	210	2 %	425	35 %	420	48 %
158471019124350	Sudeep H G	440	39 %	355	19 %	435	38 %	260	5 %
158471019266268	Sudha Reddy	395	25 %	460	50 %	435	38 %	207	2 %
158471019602096	Suguna S V	290	5 %	210	2 %	375	19 %	367	28 %
158471019894182	Suhas S R	535	72 %	575	83 %	470	52 %	473	68 %
158471019927829	Suhas Kashyap	640	94 %	605	88 %	460	48 %	367	28 %
158471019917530	Sujal Patil	430	36 %	695	97 %	410	29 %	473	68 %
158471019328093	Sujan Ghale	455	45 %	385	26 %	275	3 %	313	13 %
158471019920300	Sujata Hoonalli	490	57 %	310	10 %	410	29 %	153	0 %
158471019242867	Sujay A	315	8 %	385	26 %	435	38 %	420	48 %
158471019927546	Sukhan M S M S	500	61 %	210	2 %	375	19 %	367	28 %
158471019997743	Suma M N	350	14 %	535	73 %	375	19 %	367	28 %
158471019272604	Suma J L	350	14 %	460	50 %	325	8 %	153	0 %
158471019645255	Sumanth L	735	99 %	325	13 %	445	42 %	420	48 %
158471019725063	Sumanth H S	315	8 %	505	64 %	425	35 %	367	28 %
158471019949779	Sumanth K M	455	45 %	300	9 %	400	26 %	260	5 %
158471019123099	Suni Sunithaag	385	22 %	195	1 %	425	35 %	367	28 %
158471019383868	Sunidhi Chate	510	64 %	430	40 %	370	17 %	260	5 %
158471019654601	Sunil Rathod	395	25 %	325	13 %	395	24 %	100	0 %
158471019222837	Sunil M	395	25 %	535	73 %	445	42 %	207	2 %
158471019082252	Sunil M	325	9 %	270	6 %	360	15 %	260	5 %
158471019090106	Supritha Bhatt	525	69 %	460	50 %	-	-	473	68 %
158471019929624	Supritha.s Supritha.s	280	4 %	225	2 %	285	4 %	260	5 %
158471019999937	Supriya G	490	57 %	225	2 %	340	11 %	367	28 %
158471019057440	Supriya K	455	45 %	505	64 %	425	35 %	313	13 %
158471019838082	Supriya B Supriya	245	3 %	135	0 %	275	7 %	207	2 %
158471019944505	Suraj G	440	64 %	325	21 %	310	12 %	313	13 %
158471019905222	Suraj Jha	475	52 %	475	55 %	540	77 %	367	28 %
158471019641216	Suraj M.r	535	72 %	445	45 %	360	15 %	313	13 %
158471019249640	Suraj R K	525	69 %	325	13 %	265	2 %	207	2 %
158471019545019	Suraj Suraj	315	8 %	165	1 %	205	1 %	313	13 %
158471019472729	Suresh Suresh	300	6 %	430	40 %	485	58 %	260	5 %
158471019647850	Surya Prasad Mv Surya	265	3 %	400	31 %	315	7 %	207	2 %
158471019133745	Sushen B S	430	36 %	475	55 %	395	24 %	367	28 %
158471019723511	Sushma G	465	48 %	415	35 %	485	58 %	367	28 %

AMCAT ID	Name	AMCAT Score, Percentile							
		English Comprehension		Quantitative Ability		Logical Ability		C Programming	
158471019552356	Sushma K S	395	25 %	400	31 %	460	48 %	420	48 %
158471019388181	Sushmitha R	315	13 %	210	3 %	385	32 %	153	0 %
158471019897046	Sushmitha K V Sush	300	6 %	325	13 %	370	17 %	260	5 %
158471019562609	Suvarna Gouda	350	24 %	180	1 %	335	18 %	367	28 %
158471019574967	Suvij Surya B V	595	87 %	505	64 %	530	74 %	313	13 %
158471019799794	Suyog Angadi	500	61 %	255	4 %	335	10 %	367	28 %
158471019265014	Swaraj H S	325	9 %	355	19 %	250	2 %	207	2 %
158471019201667	Syed Waseem	290	8 %	-	-	-	-	207	2 %
158471019307698	Syeeda Taj	360	16 %	310	10 %	400	26 %	260	5 %
158471019404884	T Prajwal	430	36 %	445	45 %	445	42 %	260	5 %
158471019887971	T Nikheel	615	91 %	475	55 %	455	46 %	367	28 %
158471019045697	Tanishq Jain	385	22 %	635	93 %	590	89 %	420	48 %
158471019753037	Tasmiya.k.m. Tasmiya.k.m.	350	14 %	385	26 %	350	13 %	260	5 %
158471019993714	Tejaswini K	440	39 %	310	10 %	425	35 %	207	2 %
158471019496350	Tejaswini Srinivas	420	32 %	240	3 %	325	8 %	367	28 %
158471019787516	Tejaswini B L B L	395	25 %	400	31 %	435	38 %	473	68 %
158471019244346	Tejaswini. J	465	48 %	310	10 %	445	42 %	260	5 %
158471019601404	Theja S N	430	36 %	355	19 %	375	19 %	313	13 %
158471019120825	Thejaswi Gc	360	16 %	385	26 %	485	58 %	207	2 %
158471019962718	Thejaswini H V	440	39 %	475	55 %	420	33 %	313	13 %
158471019965140	Touqeer T M	500	61 %	605	88 %	350	13 %	367	28 %
158471019146855	U S Kavitha Kavitha	500	61 %	415	35 %	385	21 %	313	13 %
158471019084725	Uday H	350	14 %	340	16 %	310	6 %	313	13 %
158471019300559	Ullas K	465	48 %	505	64 %	495	62 %	153	0 %
158471019934866	Umar Lone	325	9 %	415	35 %	410	29 %	260	5 %
158471019664387	Umesh Badiger	300	6 %	240	3 %	340	11 %	313	13 %
158471019570284	Usmaan Ali	630	93 %	285	7 %	350	13 %	207	2 %
158471019743498	Uttara K	420	32 %	300	9 %	420	33 %	153	0 %
158471019121793	Vaibhav Vivek	770	100 %	605	88 %	540	77 %	420	48 %
158471019279199	Vandana M M	430	36 %	505	64 %	410	29 %	260	5 %
158471019436476	Varsha R	510	64 %	325	13 %	455	46 %	260	5 %
158471019419968	Varshitha T	525	69 %	340	16 %	375	19 %	313	13 %
158471019709488	Varun G	395	25 %	605	88 %	370	17 %	313	13 %
158471019676298	Vasigerappa K	350	14 %	310	10 %	300	5 %	367	28 %
158471019053045	Vedashree R	545	75 %	300	9 %	420	33 %	367	28 %
158471019164365	Veekshith R	490	57 %	445	45 %	410	29 %	367	28 %
158471019832654	Veeresh Tandale	350	14 %	460	50 %	275	3 %	473	68 %
158471019316629	Venkatesha T	405	28 %	255	4 %	370	17 %	313	13 %
158471019771518	Vennela S	465	48 %	310	10 %	455	46 %	153	0 %
158471019436414	Vidhee Gujarati	615	91 %	-	-	-	-	367	28 %
158471019248279	Vidit Brahmania	570	82 %	-	-	590	89 %	473	68 %
158471019826963	Vidya V R	370	18 %	385	26 %	370	17 %	153	0 %
158471019110013	Vidyasagar Jhamkal	560	79 %	400	31 %	300	5 %	313	13 %
158471019292982	Vidyashree S Shree	420	32 %	285	7 %	395	24 %	367	28 %
158471019074691	Vignesh V	510	64 %	460	50 %	445	42 %	207	2 %

AMCAT ID	Name	AMCAT Score, Percentile							
		English Comprehension		Quantitative Ability		Logical Ability		C Programming	
158471019135483	Vignesh R	315	13 %	370	35 %	325	15 %	260	5 %
158471019115783	Viha Agrawal	630	93 %	535	73 %	485	58 %	367	28 %
158471019423861	Vijay Raja	710	99 %	650	94 %	455	46 %	153	0 %
158471019620874	Vijaya Laxmi	405	28 %	300	9 %	420	33 %	260	5 %
158471019170921	Vijayalakshmi Chinagudi	335	11 %	310	10 %	360	15 %	260	5 %
158471019134110	Vijeth K M	360	28 %	270	9 %	420	44 %	527	84 %
158471019365070	Vinay A S	405	28 %	-	-	-	-	153	0 %
158471019465341	Vinay Kumar Dk	420	32 %	255	4 %	315	7 %	260	5 %
158471019043839	Vinay B R	475	52 %	490	60 %	435	38 %	207	2 %
158471019156968	Vinayak Hegde	395	25 %	255	4 %	520	71 %	260	5 %
158471019014062	Vinayak Patil	595	87 %	370	22 %	435	38 %	207	2 %
158471019084265	Vinaykumar Yattinahalli	465	48 %	225	2 %	425	35 %	367	28 %
158471019817593	Vineet Kalghatgi	720	99 %	550	77 %	570	85 %	580	94 %
158471019717136	Vinith B	510	64 %	400	31 %	410	29 %	260	5 %
158471019940470	Vinitha Uprala	465	48 %	490	60 %	435	38 %	260	5 %
158471019363618	Vinod Kumar	535	72 %	270	6 %	370	17 %	420	48 %
158471019842838	Vinodh R	525	69 %	310	10 %	265	2 %	367	28 %
158471019357830	Vinutha Devadiga	315	8 %	355	19 %	420	33 %	367	28 %
158471019633567	Vinutha L	430	36 %	325	13 %	310	6 %	260	5 %
158471019241111	Vinutha M	535	72 %	505	64 %	505	65 %	260	5 %
158471019650072	Vinutha N	525	69 %	370	22 %	435	38 %	260	5 %
158471019252927	Vishakha Bhat	755	100 %	535	73 %	595	90 %	633	98 %
158471019241912	Vishal C N	420	32 %	325	13 %	455	46 %	260	5 %
158471019277700	Vishrut Hiremath	385	22 %	105	0 %	230	1 %	260	5 %
158471019619021	Vishwanath Naragunde	525	69 %	385	26 %	485	58 %	260	5 %
158471019734868	Vishwanath Hiremath	490	57 %	430	40 %	460	48 %	260	5 %
158471019637068	Vishwas M	440	39 %	340	16 %	420	33 %	100	0 %
158471019032215	Vishwas S	440	39 %	210	2 %	310	6 %	260	5 %
158471019409060	Vismitha Kr	315	8 %	325	13 %	300	5 %	260	5 %
158471019213234	Vyshali Subramanya	605	89 %	460	50 %	445	42 %	313	13 %
158471019053898	Y R Gowda	465	74 %	355	30 %	360	24 %	207	2 %
158471019787074	Yamanappa Yamanappa	420	32 %	240	3 %	360	15 %	153	0 %
158471019520585	Yamini Pacheiyappan	545	75 %	325	13 %	595	90 %	313	13 %
158471019542803	Yashas P S	325	9 %	385	26 %	455	46 %	153	0 %
158471019689082	Yashas A M	420	32 %	520	69 %	505	65 %	313	13 %
158471019413112	Yashas P	430	59 %	135	0 %	340	19 %	527	84 %
158471019995284	Yashaswini M K	455	45 %	590	86 %	505	65 %	473	68 %
158471019083987	Yashaswini S	455	45 %	415	35 %	455	46 %	367	28 %
158471019096098	Yashaswini R	525	69 %	310	10 %	480	56 %	207	2 %
158471019679927	Yashaswini B T Bt	405	28 %	325	13 %	435	38 %	367	28 %
158471019999981	Yashodha Budgumpi	290	5 %	300	9 %	350	13 %	260	5 %
158471019129713	Yashwanth M	335	11 %	195	1 %	385	21 %	260	5 %
158471019278032	Yatheesha B	385	38 %	100	0 %	310	12 %	367	28 %

AMCAT ID	Name	AMCAT Score, Percentile							
		English Comprehension		Quantitative Ability		Logical Ability		C Programming	
158471019656671	Yatish A	500	61 %	415	35 %	300	5 %	473	68 %
158471019419600	Yatish J P	385	22 %	430	40 %	480	56 %	260	5 %
158471019838132	Yeshwanth S	280	4 %	135	0 %	285	4 %	367	28 %
158471019625745	Yogesh Kumar.p	395	25 %	385	26 %	480	56 %	207	2 %
158471019132302	Yogेशha M	560	79 %	460	50 %	470	52 %	420	48 %
158471019815440	Yogेशwari J	615	99 %	415	52 %	385	32 %	260	5 %

II. Statistical Significance (Confidence)

All score distributions generally follow a pattern called the Gaussian curve. The Gaussian curve is by far the most common assumption with regard to score distribution. For the purpose of comparison, we express AMCAT scores as Gaussian distribution. The most characteristic feature of this distribution is that the scores for maximum number of students fall in a very narrow range around the average value.

The percentage of scores lying in the range falls exponentially as we move away from the average value. The confidence percentage, which ranges from 0% to 100%, is indicative of the possibility that the difference in scores is by chance. A high confidence percentage indicates that it is very likely that the difference observed is real and not by chance. In this analysis, we classify differences, with confidence 90% or higher, as significantly different (that is, not by chance).

III. National Average (Norm)

To construct the norms (National average & standard deviation), balanced sampling was used to select more than 25000 students tested by Aspiring Minds nationwide. Balanced sampling technique ensures that the selected candidates are representative of entry-level job-aspirants over 22 states in India. It is ensured that the sample contains different degrees, specializations, genders, regions, etc. in the same composition as the National distribution.

To summarize score distribution of the norms and Dr Ambedkar Institute of engineering students, two values (statistics) are used: average of the scores and standard deviation of the scores. While the former value indicates what, on average, candidates score in the test, the latter value tells how much do scores deviate from the average. High value of standard deviation means that the scores are dissimilar and spread across the scale. In contrast, a low value of standard deviation means that candidates scores are similar to each other and lie near the average.

IV. Variance (Standard Deviation)

The variance (or standard deviation) is a measure of how spread out a distribution is. In other words, it is the measure of variability. A low standard deviation indicates that the data points tend to be very close to the average value, while high standard deviation indicates that the data is spread out over a large range of values.

V. About Aspiring Minds

Aspiring Minds was founded in 2007 by alumni of IIT and MIT (USA) with a vision to introduce scientific assessment methodology to bring together job-seekers and campuses across India on a common standardized platform that is recognized by multiple companies on a national level. The aim of Aspiring Minds is to highlight the pool of talented students and progressive campuses to corporates nationally, provide an insight on how they can improve their employability and help them acquire jobs on the basis of their potential. In a short span of time, Aspiring Minds has earned credibility and is working with multiple corporations such as Microsoft Research, HCL Technologies, MPhasiS EDS, Erricson, Tata Motors, Aricent, Genpact, iGATE, L&T Finance, Sapien, Godrej Agrovet and Tavant Technologies.

Board of Advisors

Prof. Tarun Khanna, HBS, USA
Dr. Una-May O'Reilly, MIT, USA
Dr. Vijay Bhushan, PhD., UIUC, USA